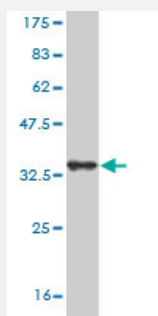


SORCS3 monoclonal antibody (M01), clone 3B12

Catalog # H00022986-M01

Size 100 ug

Applications



Western Blot detection against Immunogen (34.1 KDa) .

Specification

Product Description	Mouse monoclonal antibody raised against a partial recombinant SORCS3.
Immunogen	SORCS3 (NP_055793, 1147 a.a. ~ 1222 a.a) partial recombinant protein with GST tag. MW of the GST tag alone is 26 KDa.
Sequence	KRKIPWINYAQVQHDKEQEMIGSVSQSENAPKITLSDFTEPEELLDKELDTRVIGGIATIANSESTKE IPNCTSV
Host	Mouse
Reactivity	Human
Isotype	IgG2a Kappa
Quality Control Testing	Antibody Reactive Against Recombinant Protein. Western Blot detection against Immunogen (34.1 KDa) .
Storage Buffer	In 1x PBS, pH 7.4
Storage Instruction	Store at -20°C or lower. Aliquot to avoid repeated freezing and thawing.

Applications

- Western Blot (Recombinant protein)

[Protocol Download](#)

- ELISA

Gene Info — SORCS3

Entrez GeneID [22986](#)

GeneBank Accession# [NM_014978](#)

Protein Accession# [NP_055793](#)

Gene Name SORCS3

Gene Alias SORCS

Gene Description sortilin-related VPS10 domain containing receptor 3

Omim ID [606285](#)

Gene Ontology [Hyperlink](#)

Gene Summary This gene encodes one family member of vacuolar protein sorting 10 (VPS10) domain-containing receptor proteins. The VPS10 domain name comes from the yeast carboxypeptidase Y sorting receptor Vps10 protein. Members of this gene family are large with many exons but the CDS lengths are usually less than 3700 nt. Very large introns typically separate the exons encoding the VPS10 domain; the remaining exons are separated by much smaller-sized introns. These genes are strongly expressed in the central nervous system. Two of the five family members (sortilin and sortilin-related receptor) are synthesized as preproteins; it is not yet known if this encoded protein is also a preprotein. [provided by RefSeq]

Other Designations 6330404A12Rik|OTTHUMP00000020444|VPS10 domain receptor protein SORCS 3|VPS10 domain receptor protein SORCS 3 (SORCS3)

Disease

- [Alzheimer Disease](#)
- [Genetic Predisposition to Disease](#)
- [Tobacco Use Disorder](#)