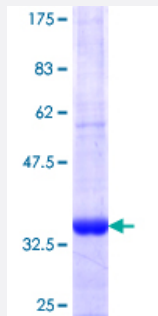


P2RX2 (Human) Recombinant Protein (Q01)

Catalog # H00022953-Q01

Size 25 ug, 10 ug

Applications



Specification

Product Description	Human P2RX2 partial ORF (NP_036358.2, 128 a.a. - 205 a.a.) recombinant protein with GST-tag at N-terminal.
Sequence	KNSIHYPKFHFSSKGNIADRTDGYLKRCTFHEASDLYCPIFKLGFMEKAGESFTELAHKGGVIGVIIN WDCDLDPAS
Host	Wheat Germ (in vitro)
Theoretical MW (kDa)	34.32
Interspecies Antigen Sequence	Mouse (84); Rat (85)
Preparation Method	in vitro wheat germ expression system
Purification	Glutathione Sepharose 4 Fast Flow
Quality Control Testing	12.5% SDS-PAGE Stained with Coomassie Blue.
Storage Buffer	50 mM Tris-HCl, 10 mM reduced Glutathione, pH=8.0 in the elution buffer.
Storage Instruction	Store at -80°C. Aliquot to avoid repeated freezing and thawing.
Note	Best use within three months from the date of receipt of this protein.

Applications

- Enzyme-linked Immunoabsorbent Assay
- Western Blot (Recombinant protein)
- Antibody Production
- Protein Array

Gene Info — P2RX2

Entrez GeneID [22953](#)

GeneBank Accession# [NM_012226](#)

Protein Accession# [NP_036358.2](#)

Gene Name P2RX2

Gene Alias MGC129601, P2X2

Gene Description purinergic receptor P2X, ligand-gated ion channel, 2

Omim ID [600844](#)

Gene Ontology [Hyperlink](#)

Gene Summary The product of this gene belongs to the family of purinoceptors for ATP. This receptor functions as a ligand-gated ion channel. Binding to ATP mediates synaptic transmission between neurons and from neurons to smooth muscle. Six transcript variants encoding six distinct isoforms have been identified for this gene. [provided by RefSeq]

Other Designations ATP receptor|P2X Receptor, subunit 2|P2X purinoceptor 2|purinergic receptor P2X2

Pathway

- [Calcium signaling pathway](#)
- [Neuroactive ligand-receptor interaction](#)