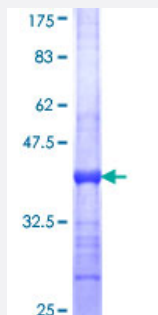


# SLC4A1AP (Human) Recombinant Protein (Q01)

Catalog # H00022950-Q01

Size 25 ug, 10 ug

## Applications



## Specification

<b>Product Description</b>	Human SLC4A1AP partial ORF ( NP_060628, 154 a.a. - 254 a.a.) recombinant protein with GST-tag at N-terminal.
<b>Sequence</b>	YQEPPWGGPATAPYSLETLKGGTILGTRSLKGTSYCLFGRLSGCDVCLEHPSVSRYPHAVLQHRAS GPDGECDSNGPGFYLYDLGSTHGTFLNKTRIPPTY
<b>Host</b>	Wheat Germ (in vitro)
<b>Theoretical MW (kDa)</b>	36.85
<b>Interspecies Antigen Sequence</b>	Mouse (77); Rat (79)
<b>Preparation Method</b>	<a href="#">in vitro wheat germ expression system</a>
<b>Purification</b>	Glutathione Sepharose 4 Fast Flow
<b>Quality Control Testing</b>	12.5% SDS-PAGE Stained with Coomassie Blue.
<b>Storage Buffer</b>	50 mM Tris-HCl, 10 mM reduced Glutathione, pH=8.0 in the elution buffer.
<b>Storage Instruction</b>	Store at -80°C. Aliquot to avoid repeated freezing and thawing.
<b>Note</b>	Best use within three months from the date of receipt of this protein.

## Applications

- Enzyme-linked Immunoabsorbent Assay
- Western Blot (Recombinant protein)
- Antibody Production
- Protein Array

## Gene Info — SLC4A1AP

Entrez GeneID	<a href="#">22950</a>
GeneBank Accession#	<a href="#">NM_018158</a>
Protein Accession#	<a href="#">NP_060628</a>
Gene Name	SLC4A1AP
Gene Alias	FLJ10624, FLJ41004, HLC3, MGC120646, MGC120648
Gene Description	solute carrier family 4 (anion exchanger), member 1, adaptor protein
Omim ID	<a href="#">602655</a>
Gene Ontology	<a href="#">Hyperlink</a>
Gene Summary	member 1
Other Designations	kanadaptin kidney anion exchanger adaptor protein lung cancer oncogene 3 solute carrier family 4 (anion exchanger), member 1, adapter protein