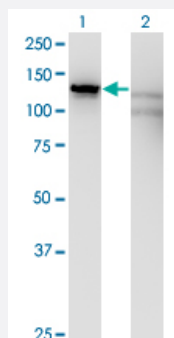


# SLC4A1AP monoclonal antibody (M01), clone 2G10

Catalog # H00022950-M01

Size 100 ug

## Applications

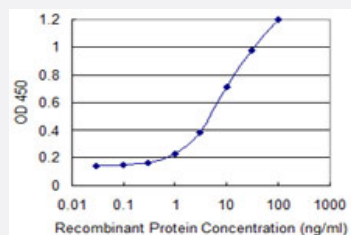


### Western Blot (Transfected lysate)

Western Blot analysis of SLC4A1AP expression in transfected 293T cell line by SLC4A1AP monoclonal antibody (M01), clone 2G10.

Lane 1: SLC4A1AP transfected lysate (Predicted MW: 88.8 kDa).

Lane 2: Non-transfected lysate.



### Sandwich ELISA (Recombinant protein)

Detection limit for recombinant GST tagged SLC4A1AP is 0.3 ng/ml as a capture antibody.



Western Blot detection against Immunogen (36.85 kDa) .

## Specification

### Product Description

Mouse monoclonal antibody raised against a partial recombinant SLC4A1AP.

<b>Immunogen</b>	SLC4A1AP (NP_060628, 154 a.a. ~ 254 a.a) partial recombinant protein with GST tag. MW of the GST tag alone is 26 KDa.
<b>Sequence</b>	YQEPPWGGPATAPYSLETLKGGTILGTRSLKGTSYCLFGRLSGCDVCLEHPSVSRYPHAVLQHRAS GPDGECDSNGPGFYLYDLGSTHGTFLNKTRIPPTY
<b>Host</b>	Mouse
<b>Reactivity</b>	Human
<b>Interspecies Antigen Sequence</b>	Mouse (77); Rat (79)
<b>Isotype</b>	IgG2a Kappa
<b>Quality Control Testing</b>	Antibody Reactive Against Recombinant Protein. Western Blot detection against Immunogen (36.85 KDa) .
<b>Storage Buffer</b>	In 1x PBS, pH 7.4
<b>Storage Instruction</b>	Store at -20°C or lower. Aliquot to avoid repeated freezing and thawing.

## Applications

- Western Blot (Transfected lysate)

Western Blot analysis of SLC4A1AP expression in transfected 293T cell line by SLC4A1AP monoclonal antibody (M01), clone 2G10.

Lane 1: SLC4A1AP transfected lysate (Predicted MW: 88.8 KDa).

Lane 2: Non-transfected lysate.

[Protocol Download](#)

- Western Blot (Recombinant protein)

[Protocol Download](#)

- Sandwich ELISA (Recombinant protein)

Detection limit for recombinant GST tagged SLC4A1AP is 0.3 ng/ml as a capture antibody.

[Protocol Download](#)

- ELISA

## Gene Info — SLC4A1AP

Entrez GeneID	<a href="#">22950</a>
GeneBank Accession#	<a href="#">NM_018158</a>
Protein Accession#	<a href="#">NP_060628</a>
Gene Name	SLC4A1AP
Gene Alias	FLJ10624, FLJ41004, HLC3, MGC120646, MGC120648
Gene Description	solute carrier family 4 (anion exchanger), member 1, adaptor protein
Omim ID	<a href="#">602655</a>
Gene Ontology	<a href="#">Hyperlink</a>
Gene Summary	member 1
Other Designations	kanadaptin kidney anion exchanger adaptor protein lung cancer oncogene 3 solute carrier family 4 (anion exchanger), member 1, adapter protein