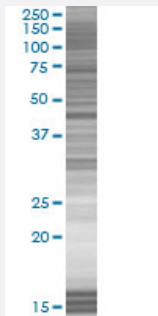


MAPRE3 293T Cell Transient Overexpression Lysate(Denatured)

Catalog # H00022924-T01

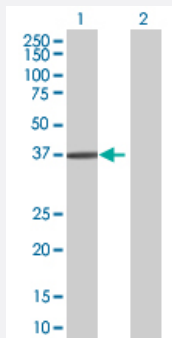
Size 100 uL

Applications



SDS-PAGE Gel

MAPRE3 transfected lysate.



Western Blot

Lane 1: MAPRE3 transfected lysate (31.02 KDa)

Lane 2: Non-transfected lysate.

Specification

Transfected Cell Line	293T
Plasmid	pCMV-MAPRE3 full-length
Host	Human
Theoretical MW (kDa)	31.02
Interspecies Antigen Sequence	Mouse (99); Rat (99)

Quality Control Testing

Transient overexpression cell lysate was tested with Anti-MAPRE3 antibody ([H00022924-B01](#)) by Western Blots.
SDS-PAGE Gel
MAPRE3 transfected lysate.
Western Blot
Lane 1: MAPRE3 transfected lysate (31.02 KDa)
Lane 2: Non-transfected lysate.

Storage Buffer

1X Sample Buffer (50 mM Tris-HCl, 2% SDS, 10% glycerol, 300 mM 2-mercaptoethanol, 0.01% Bromophenol blue)

Storage Instruction

Store at -80°C. Aliquot to avoid repeated freezing and thawing.

Applications

- Western Blot

Gene Info — MAPRE3

Entrez GeneID[22924](#)**GeneBank Accession#**[NM_012326.2](#)**Protein Accession#**[-](#)**Gene Name**

MAPRE3

Gene Alias

EB3, EBF3, EBF3-S, RP3

Gene Description

microtubule-associated protein, RP/EB family, member 3

Omim ID[605788](#)**Gene Ontology**[Hyperlink](#)**Gene Summary**

The protein encoded by this gene is a member of the RP/EB family of genes. The protein localizes to the cytoplasmic microtubule network and binds APC, a homolog of the adenomatous polyposis coli tumor suppressor gene. [provided by RefSeq]

Other Designations

APC binding protein