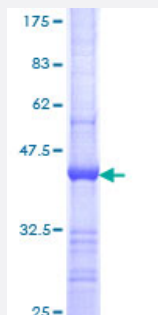


MAPRE1 (Human) Recombinant Protein (Q01)

Catalog # H00022919-Q01

Size 25 ug, 10 ug

Applications



Specification

Product Description	Human MAPRE1 partial ORF (NP_036457, 1 a.a. - 110 a.a.) recombinant protein with GST-tag at N-terminal.
Sequence	MAVNVYSTSVTSDNLSRHDMLAWINESLQLNLTKIEQLCSGAAYCQFMDMLFPGSIALKKVKFQA KLEHEYIQNFKILQAGFKRMGVDKIIPVDKLVKGKFQDNFEFVQW
Host	Wheat Germ (in vitro)
Theoretical MW (kDa)	37.84
Interspecies Antigen Sequence	Mouse (97); Rat (96)
Preparation Method	in vitro wheat germ expression system
Purification	Glutathione Sepharose 4 Fast Flow
Quality Control Testing	12.5% SDS-PAGE Stained with Coomassie Blue.
Storage Buffer	50 mM Tris-HCl, 10 mM reduced Glutathione, pH=8.0 in the elution buffer.
Storage Instruction	Store at -80°C. Aliquot to avoid repeated freezing and thawing.
Note	Best use within three months from the date of receipt of this protein.

Applications

- Enzyme-linked Immunoabsorbent Assay
- Western Blot (Recombinant protein)
- Antibody Production
- Protein Array

Gene Info — MAPRE1

Entrez GeneID [22919](#)

GeneBank Accession# [NM_012325](#)

Protein Accession# [NP_036457](#)

Gene Name MAPRE1

Gene Alias EB1, MGC117374, MGC129946

Gene Description microtubule-associated protein, RP/EB family, member 1

Omim ID [603108](#)

Gene Ontology [Hyperlink](#)

Gene Summary The protein encoded by this gene was first identified by its binding to the APC protein which is often mutated in familial and sporadic forms of colorectal cancer. This protein localizes to microtubules, especially the growing ends, in interphase cells. During mitosis, the protein is associated with the centrosomes and spindle microtubules. The protein also associates with components of the dynein complex and the intermediate chain of cytoplasmic dynein. Because of these associations, it is thought that this protein is involved in the regulation of microtubule structures and chromosome stability. This gene is a member of the RP/EB family. [provided by RefSeq]

Other Designations OTTHUMP00000030608|adenomatous polyposis coli-binding protein EB1