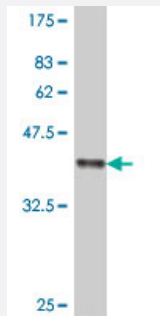


MAPRE1 polyclonal antibody (A01)

Catalog # H00022919-A01

Size 50 uL

Applications



Western Blot detection against Immunogen (38.21 KDa) .

Specification

Product Description	Mouse polyclonal antibody raised against a partial recombinant MAPRE1.
Immunogen	MAPRE1 (NP_036457, 1 a.a. ~ 110 a.a) partial recombinant protein with GST tag.
Sequence	MAVNVYSTSVTSDNLSRHDMLAWINESLQLNLTKIEQLCSGAAYCQFMDMLFPGSIALKKVKFQA KLEHEYIQNFKILQAGFKRMGVDKIIPVDKLVKGKFQDNFEFVQW
Host	Mouse
Reactivity	Human
Interspecies Antigen Sequence	Mouse (97); Rat (96)
Quality Control Testing	Antibody Reactive Against Recombinant Protein. Western Blot detection against Immunogen (38.21 KDa) .
Storage Buffer	50 % glycerol
Storage Instruction	Store at -20°C or lower. Aliquot to avoid repeated freezing and thawing.

Applications

- Western Blot (Recombinant protein)

[Protocol Download](#)

- ELISA

Gene Info — MAPRE1

Entrez GeneID [22919](#)

GeneBank Accession# [NM_012325](#)

Protein Accession# [NP_036457](#)

Gene Name MAPRE1

Gene Alias EB1, MGC117374, MGC129946

Gene Description microtubule-associated protein, RP/EB family, member 1

Omim ID [603108](#)

Gene Ontology [Hyperlink](#)

Gene Summary The protein encoded by this gene was first identified by its binding to the APC protein which is often mutated in familial and sporadic forms of colorectal cancer. This protein localizes to microtubules, especially the growing ends, in interphase cells. During mitosis, the protein is associated with the centrosomes and spindle microtubules. The protein also associates with components of the dynein complex and the intermediate chain of cytoplasmic dynein. Because of these associations, it is thought that this protein is involved in the regulation of microtubule structures and chromosome stability. This gene is a member of the RP/EB family. [provided by RefSeq]

Other Designations OTTHUMP00000030608|adenomatous polyposis coli-binding protein EB1