

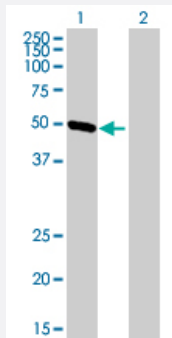
MaxPab®

DHX30 purified MaxPab mouse polyclonal antibody (B01P)

Catalog # H00022907-B01P

Size 50 ug

Applications



Western Blot (Transfected lysate)

Western Blot analysis of DHX30 expression in transfected 293T cell line ([H00022907-T01](#)) by DHX30 MaxPab polyclonal antibody.

Lane 1: DHX30 transfected lysate(55.11 KDa).

Lane 2: Non-transfected lysate.

Specification

Product Description	Mouse polyclonal antibody raised against a full-length human DHX30 protein.
Immunogen	DHX30 (AAH14237.1, 1 a.a. ~ 501 a.a) full-length human protein.
Sequence	MHESKYLILPVHSNIPMMDQKAIFQQPPVGVRKMLATNIAETSITINDIVHVDSGLHKEERYDLKTK VSCLETWVSRANVIQRRGRAGRCQSGFAYHLFPRSRLEKMVPFQVPEILRTPLENLVLQAKIHM PEKTAVEFLSKAVDSPNIKAVDEAVILLQEIGVLDQREYLTTLGQRLAHISTDPR LAKAMLA AIFRCL HPLL VVVSCLTRDPFSSSLQNRAEVDKVKALLSHDSGSDHLAFVRAVAGWEEVLRWQDRSSRE NYLEENLLYAPSLRFIHLIKQFSENIYEAFLVGKPSDCTLASAQCNEYSEEEELVKGVL MAGLYPN LIQVRQGKVTRQGKFKPNSVTYRTKSGNILLHKSTINREATRLRSRWLT YFMAVKSN GSVFVRDSS QVHPLAVLLLTDGDVHIRDDGRRATISLSDSDLLRLEGDSRTVWLLKELRRALGRMVERSLRSEL AALPPSVQEEH GQLLALLAELLRGPCGSFDVRKTADD
Host	Mouse
Reactivity	Human
Interspecies Antigen Sequence	Mouse (98); Rat (98)
Quality Control Testing	Antibody reactive against mammalian transfected lysate.

Storage Buffer

In 1x PBS, pH 7.4

Storage Instruction

Store at -20°C or lower. Aliquot to avoid repeated freezing and thawing.

Applications

- Western Blot (Transfected lysate)

Western Blot analysis of DHX30 expression in transfected 293T cell line ([H00022907-T01](#)) by DHX30 MaxPab polyclonal antibody.

Lane 1: DHX30 transfected lysate(55.11 KDa).

Lane 2: Non-transfected lysate.

[Protocol Download](#)

Gene Info — DHX30

Entrez GeneID[22907](#)**GeneBank Accession#**[BC014237](#)**Protein Accession#**[AAH14237.1](#)**Gene Name**

DHX30

Gene Alias

DDX30, FLJ11214, KIAA0890, Ret-CoR

Gene Description

DEAH (Asp-Glu-Ala-His) box polypeptide 30

Gene Ontology[Hyperlink](#)**Gene Summary**

DEAD box proteins, characterized by the conserved motif Asp-Glu-Ala-Asp (DEAD), are putative RNA helicases. They are implicated in a number of cellular processes involving alteration of RNA secondary structure such as translation initiation, nuclear and mitochondrial splicing, and ribosome and spliceosome assembly. Based on their distribution patterns, some members of this DEAD box protein family are believed to be involved in embryogenesis, spermatogenesis, and cellular growth and division. This gene encodes a member of this family. The encoded protein has 97% sequence identity with the mouse HELG protein. Alternatively spliced transcript variants encoding distinct isoforms have been found for this gene. [provided by RefSeq]

Other Designations

DEAD/H (Asp-Glu-Ala-Asp/His) box polypeptide 30|retina co-repressor

Disease

- [Tobacco Use Disorder](#)