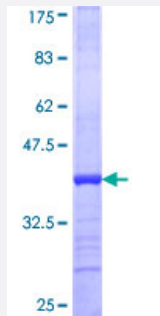


# EPN2 (Human) Recombinant Protein (Q01)

Catalog # H00022905-Q01

Size 25 ug, 10 ug

## Applications



## Specification

<b>Product Description</b>	Human EPN2 partial ORF ( NP_683723, 1 a.a. - 101 a.a.) recombinant protein with GST-tag at N-terminal.
<b>Sequence</b>	MTTSSIRRQMKNVNNYSEAEIKVREATSNDPWGPSSSLMTEIADLTYNVVAFSEIMSMVWKRLND HGKNWRHVYKALTLLDYLIKTGSERVAQQCRENIF
<b>Host</b>	Wheat Germ (in vitro)
<b>Theoretical MW (kDa)</b>	36.85
<b>Interspecies Antigen Sequence</b>	Mouse (76); Rat (76)
<b>Preparation Method</b>	<a href="#">in vitro wheat germ expression system</a>
<b>Purification</b>	Glutathione Sepharose 4 Fast Flow
<b>Quality Control Testing</b>	12.5% SDS-PAGE Stained with Coomassie Blue.
<b>Storage Buffer</b>	50 mM Tris-HCl, 10 mM reduced Glutathione, pH=8.0 in the elution buffer.
<b>Storage Instruction</b>	Store at -80°C. Aliquot to avoid repeated freezing and thawing.
<b>Note</b>	Best use within three months from the date of receipt of this protein.

## Applications

- Enzyme-linked Immunoabsorbent Assay
- Western Blot (Recombinant protein)
- Antibody Production
- Protein Array

## Gene Info — EPN2

Entrez GeneID [22905](#)

GeneBank Accession# [NM\\_148921](#)

Protein Accession# [NP\\_683723](#)

Gene Name EPN2

Gene Alias EHB21, KIAA1065

Gene Description epsin 2

Omim ID [607263](#)

Gene Ontology [Hyperlink](#)

**Gene Summary** This gene encodes a protein which interacts with clathrin and adaptor-related protein complex 2, alpha 1 subunit. The protein is found in a brain-derived clathrin-coated vesicle fraction and localizes to the peri-Golgi region and the cell periphery. The protein is thought to be involved in clathrin-mediated endocytosis. Alternate splicing of this gene results in multiple transcript variants encoding different isoforms. [provided by RefSeq]

**Other Designations** Eps15 binding protein|OTTHUMP00000065810|OTTHUMP00000065889

## Pathway

- [Endocytosis](#)

## Disease

- [Tobacco Use Disorder](#)