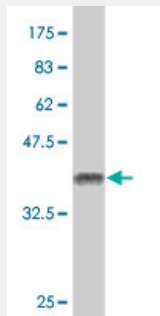


## EPN2 polyclonal antibody (A01)

Catalog # H00022905-A01

Size 50 uL

### Applications



Western Blot detection against Immunogen (37.22 KDa) .

### Specification

<b>Product Description</b>	Mouse polyclonal antibody raised against a partial recombinant EPN2.
<b>Immunogen</b>	EPN2 (NP_683723, 1 a.a. ~ 101 a.a) partial recombinant protein with GST tag.
<b>Sequence</b>	MTTSSIRRQMKNVNNYSEAEIKVREATSNDPWGPSSSLMTEIADLTYNVVAFSEIMSMVWKRLND HGKNWRHVYKALTLLDYLIKTGSERVAQQCRENIF
<b>Host</b>	Mouse
<b>Reactivity</b>	Human
<b>Interspecies Antigen Sequence</b>	Mouse (76); Rat (76)
<b>Quality Control Testing</b>	Antibody Reactive Against Recombinant Protein. Western Blot detection against Immunogen (37.22 KDa) .
<b>Storage Buffer</b>	50 % glycerol
<b>Storage Instruction</b>	Store at -20°C or lower. Aliquot to avoid repeated freezing and thawing.

### Applications

- Western Blot (Recombinant protein)

[Protocol Download](#)

- ELISA

## Gene Info — EPN2

Entrez GeneID [22905](#)

GeneBank Accession# [NM\\_148921](#)

Protein Accession# [NP\\_683723](#)

Gene Name EPN2

Gene Alias EHB21, KIAA1065

Gene Description epsin 2

Omim ID [607263](#)

Gene Ontology [Hyperlink](#)

**Gene Summary** This gene encodes a protein which interacts with clathrin and adaptor-related protein complex 2, alpha 1 subunit. The protein is found in a brain-derived clathrin-coated vesicle fraction and localizes to the peri-Golgi region and the cell periphery. The protein is thought to be involved in clathrin-mediated endocytosis. Alternate splicing of this gene results in multiple transcript variants encoding different isoforms. [provided by RefSeq]

**Other Designations** Eps15 binding protein|OTTHUMP00000065810|OTTHUMP00000065889

## Pathway

- [Endocytosis](#)

## Disease

- [Tobacco Use Disorder](#)