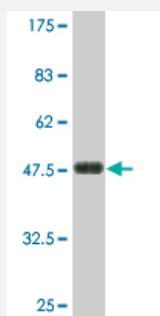


LPHN1 monoclonal antibody (M03), clone 4E12

Catalog # H00022859-M03

Size 100 ug

Applications



Western Blot detection against Immunogen (47.85 KDa) .

Specification

Product Description	Mouse monoclonal antibody raised against a full-length recombinant LPHN1.
Immunogen	LPHN1 (AAH19928, 1 a.a. ~ 201 a.a) full-length recombinant protein with GST tag. MW of the GST tag alone is 26 KDa.
Sequence	MGLASHLERLMAEGKWGGTGVVEGMGMAEEGAGNGKAVWGMGRGKGERSPSLSTFPQGRR SQVPGLGSGHPCSGRLDPKSQTPEAPGSGCVLSTCPGPLLSSLGQPPQPPSLNSRGSAPGH PSPAPALPFPQRWPLHLCSDLSPSLCPSFSHKCHEFSNIFGSQPAAAMNFVGLRGRGSRKELG GRGQVGGWRDPFCC
Host	Mouse
Reactivity	Human
Isotype	IgG2a Kappa
Quality Control Testing	Antibody Reactive Against Recombinant Protein. Western Blot detection against Immunogen (47.85 KDa) .
Storage Buffer	In 1x PBS, pH 7.4
Storage Instruction	Store at -20°C or lower. Aliquot to avoid repeated freezing and thawing.

Applications

- Western Blot (Recombinant protein)

[Protocol Download](#)

- ELISA

Gene Info — LPHN1

Entrez GeneID [22859](#)

GeneBank Accession# [BC019928](#)

Protein Accession# [AAH19928](#)

Gene Name LPHN1

Gene Alias C1RL1, CL1, LEC2

Gene Description latrophilin 1

Gene Ontology [Hyperlink](#)

Gene Summary This gene encodes a member of the latrophilin subfamily of G-protein coupled receptors (GPCR). Latrophilins may function in both cell adhesion and signal transduction. In experiments with non-human species, endogenous proteolytic cleavage within a cysteine-rich GPS (G-protein-coupled-receptor proteolysis site) domain resulted in two subunits (a large extracellular N-terminal cell adhesion subunit and a subunit with substantial similarity to the secretin/calcitonin family of GPCRs) being non-covalently bound at the cell membrane. Latrophilin-1 has been shown to recruit the neurotoxin from black widow spider venom, alpha-latrotoxin, to the synapse plasma membrane. Alternative splicing results in multiple variants encoding distinct isoforms

Other Designations calcium-independent alpha-latrotoxin receptor 1|lectomedin-2