

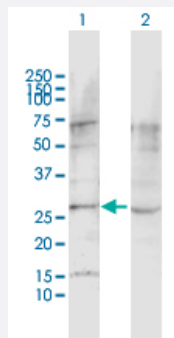
MaxPab®

LPHN1 purified MaxPab rabbit polyclonal antibody (D01P)

Catalog # H00022859-D01P

Size 100 ug

Applications



Western Blot (Transfected lysate)

Western Blot analysis of LPHN1 expression in transfected 293T cell line ([H00022859-T04](#)) by LPHN1 MaxPab polyclonal antibody.

Lane 1: LPHN1 transfected lysate(20.80 KDa).

Lane 2: Non-transfected lysate.

Specification

Product Description	Rabbit polyclonal antibody raised against a full-length human LPHN1 protein.
Immunogen	LPHN1 (AAH19928.1, 1 a.a. ~ 201 a.a) full-length human protein.
Sequence	MGLISHLERLMAEGKWGGTGVVEGMGMAEEGAGNGKAVWGMGRGKGERSPSLSSTFPQGRR SQVPGLGSGHPCSGRLDPKSQTPEAPGSGCVLSTCPGPLLSSLSGQPPQPPSLNSRGSAPGH PSPAPALPFPQRWPLHLCSDLSPSLCPSFSHKCHEFSNIFGSQPAAAMNFVGLRGRGSRKELG GRGQVGGWRDPFCC
Host	Rabbit
Reactivity	Human
Quality Control Testing	Antibody reactive against mammalian transfected lysate.
Storage Buffer	In 1x PBS, pH 7.4
Storage Instruction	Store at -20°C or lower. Aliquot to avoid repeated freezing and thawing.

Applications

- Western Blot (Transfected lysate)

Western Blot analysis of LPHN1 expression in transfected 293T cell line ([H00022859-T04](#)) by LPHN1 MaxPab polyclonal antibody.

Lane 1: LPHN1 transfected lysate(20.80 KDa).

Lane 2: Non-transfected lysate.

[Protocol Download](#)

Gene Info — LPHN1

Entrez GeneID	22859
---------------	-----------------------

GeneBank Accession#	BC019928
---------------------	--------------------------

Protein Accession#	AAH19928.1
--------------------	----------------------------

Gene Name	LPHN1
-----------	-------

Gene Alias	CIRL1, CL1, LEC2
------------	------------------

Gene Description	latrophilin 1
------------------	---------------

Gene Ontology	Hyperlink
---------------	---------------------------

Gene Summary	This gene encodes a member of the latrophilin subfamily of G-protein coupled receptors (GPCR). Latrophilins may function in both cell adhesion and signal transduction. In experiments with non-human species, endogenous proteolytic cleavage within a cysteine-rich GPS (G-protein-coupled-receptor proteolysis site) domain resulted in two subunits (a large extracellular N-terminal cell adhesion subunit and a subunit with substantial similarity to the secretin/calcitonin family of GPCRs) being non-covalently bound at the cell membrane. Latrophilin-1 has been shown to recruit the neurotoxin from black widow spider venom, alpha-latrotoxin, to the synapse plasma membrane. Alternative splicing results in multiple variants encoding distinct isoforms
--------------	---

Other Designations	calcium-independent alpha-latrotoxin receptor 1 lectomedin-2
--------------------	--