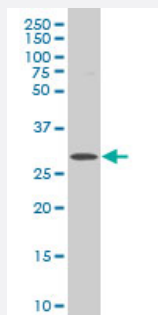


ICK polyclonal antibody (A01)

Catalog # H00022858-A01

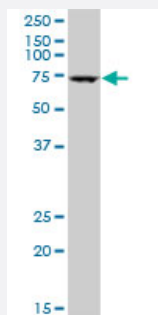
Size 50 uL

Applications



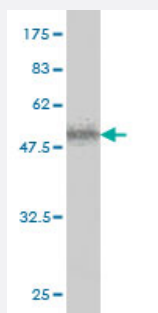
Western Blot (Cell lysate)

ICK polyclonal antibody (A01), Lot # 051103JC01 Western Blot analysis of ICK expression in Y-79 (Cat # L042V1).



Western Blot (Cell lysate)

ICK polyclonal antibody (A01), Lot # CAO0060412QCS1. Western Blot analysis of ICK expression in NIH/3T3.



Western Blot detection against Immunogen (58.23 KDa) .

Specification

Product Description

Mouse polyclonal antibody raised against a full-length recombinant ICK.

Immunogen

ICK (AAH35807, 1 a.a. ~ 292 a.a) full-length recombinant protein with GST tag.

Sequence	MNRYTTIRQLGDGTYGSVLLGRSIESGELIAIKMKRKFYSWEECMNLREVKSLKKLNHANVVKLK EVIRENDHLYFIFEYMKENLYQLIKERNKLPESAIRNIMYQILQGLAFIHKHGFFHRDLKPENLLCMG PELVKIADFGlareIRSKPPYTDYVSTRWYRAPEVLLRSTNYSSPIDVWAVGCIMAEVYTLRPLFPG ASEIDTIFKICQVLGTPKKTDWPEGYQLSSAMNFRWPQCVPNLKTLPNASSEAVQLLRDMLQW DPKKRPTASQVFFHFLVITFISNSE
Host	Mouse
Reactivity	Human, Mouse
Interspecies Antigen Sequence	Mouse (97); Rat (97)
Quality Control Testing	Antibody Reactive Against Recombinant Protein. Western Blot detection against Immunogen (58.23 KDa) .
Storage Buffer	50 % glycerol
Storage Instruction	Store at -20°C or lower. Aliquot to avoid repeated freezing and thawing.

Applications

- Western Blot (Cell lysate)

ICK polyclonal antibody (A01), Lot # 051103JC01 Western Blot analysis of ICK expression in Y-79 (Cat # L042V1).

[Protocol Download](#)

- Western Blot (Cell lysate)

ICK polyclonal antibody (A01), Lot # CAO0060412QCS1. Western Blot analysis of ICK expression in NIH/3T3.

[Protocol Download](#)

- Western Blot (Recombinant protein)

[Protocol Download](#)

- ELISA

Gene Info — ICK

Entrez GeneID [22858](#)

GeneBank Accession# [BC035807](#)

Protein Accession# [AAH35807](#)

Gene Name	ICK
Gene Alias	KIAA0936, LCK2, MGC46090, MRK
Gene Description	intestinal cell (MAK-like) kinase
Gene Ontology	Hyperlink
Gene Summary	Eukaryotic protein kinases are enzymes that belong to a very extensive family of proteins which share a conserved catalytic core common with both serine/threonine and tyrosine protein kinases. This gene encodes an intestinal serine/threonine kinase harboring a dual phosphorylation site found in mitogen-activating protein (MAP) kinases. The protein localizes to the intestinal crypt region and is thought to be important in intestinal epithelial cell proliferation and differentiation. Alternative splicing has been observed at this locus and two variants, encoding the same isoform, have been identified. [provided by RefSeq]
Other Designations	MAK-related kinase[OTTHUMP00000016630]OTTHUMP00000039961 intestinal cell kinase serine/threonine protein kinase

Publication Reference

- [KLC3 Regulates Ciliary Trafficking and Cyst Progression in CILK1 Deficiency-Related Polycystic Kidney Disease.](#)

Gyueong Rah, Hwayeon Cha, Joohee Kim, Jieun Song, Hyunho Kim, Yun Kyu Oh, Curie Ahn, Minyong Kang, Jongmin Kim, Kyung Hyun Yoo, Min Jung Kim, Hyuk Wan Ko, Je Yeong Ko, and Jong Hoon Park.

Journal of the American Society of Nephrology 2022 Aug; ASN:2021111455.

Application: IF, Human, Human kidney

- [A Novel Protein Kinase from the Ciliate Euplotes raikovi with Close Structural Identity to the Mammalian Intestinal and Male-Germ Cell Kinases: Characterization and Functional Implications in the Autocrine Pheromone Signaling Loop.](#)

Vallesi A, Di Pretoro B, Ballarini P, Apone F, Luporini P.

Protist 2010 Apr; 161(2):250.

Application: IF, WB, Protozoa, Ciliate Euplotes raikovi

Disease

- [Celiac Disease](#)
- [Genetic Predisposition to Disease](#)