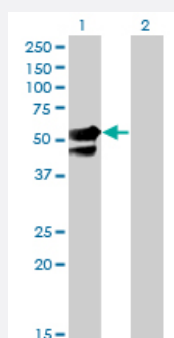


AAK1 monoclonal antibody (M02), clone 4B10

Catalog # H00022848-M02

Size 100 ug

Applications

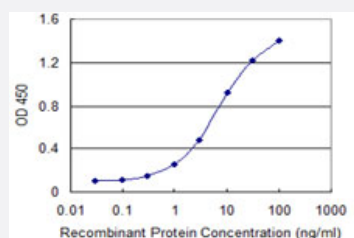


Western Blot (Transfected lysate)

Western Blot analysis of AAK1 expression in transfected 293T cell line by AAK1 monoclonal antibody (M02), clone 4B10.

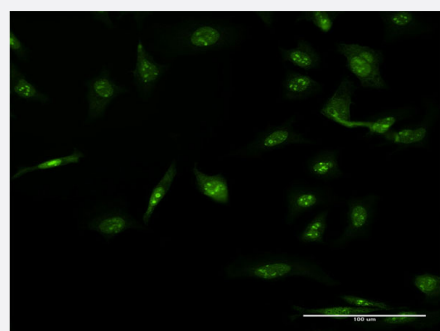
Lane 1: AAK1 transfected lysate (52 KDa).

Lane 2: Non-transfected lysate.



Sandwich ELISA (Recombinant protein)

Detection limit for recombinant GST tagged AAK1 is 0.1 ng/ml as a capture antibody.



Immunofluorescence

Immunofluorescence of monoclonal antibody to AAK1 on HeLa cell . [antibody concentration 10 ug/ml]



Western Blot detection against Immunogen (36.74 KDa) .

Specification

Product Description	Mouse monoclonal antibody raised against a partial recombinant AAK1.
Immunogen	AAK1 (AAH02695, 315 a.a. ~ 415 a.a) partial recombinant protein with GST tag. MW of the GST tag alone is 26 KDa.
Sequence	LKKECPINLVQNSPIAKLPEPVKASEAAAKKTQPKARLTDPITTE TSIAPRQRPKAGQTQPNPGI LPIQPALTPRKRA TVQPPPQAAGSSNQPGLLASV
Host	Mouse
Reactivity	Human
Interspecies Antigen Sequence	Mouse (94); Rat (94)
Isotype	IgG2a Kappa
Quality Control Testing	Antibody Reactive Against Recombinant Protein. Western Blot detection against Immunogen (36.74 KDa) .
Storage Buffer	In 1x PBS, pH 7.4
Storage Instruction	Store at -20°C or lower. Aliquot to avoid repeated freezing and thawing.

Applications

● Western Blot (Transfected lysate)

Western Blot analysis of AAK1 expression in transfected 293T cell line by AAK1 monoclonal antibody (M02), clone 4B10.

Lane 1: AAK1 transfected lysate(52 KDa).

Lane 2: Non-transfected lysate.

[Protocol Download](#)

- Western Blot (Recombinant protein)

[Protocol Download](#)

- Sandwich ELISA (Recombinant protein)

Detection limit for recombinant GST tagged AAK1 is 0.1 ng/ml as a capture antibody.

[Protocol Download](#)

- ELISA

- Immunofluorescence

Immunofluorescence of monoclonal antibody to AAK1 on HeLa cell . [antibody concentration 10 ug/ml]

Gene Info — AAK1

Entrez GeneID [22848](#)

GeneBank Accession# [BC002695](#)

Protein Accession# [AAH02695](#)

Gene Name AAK1

Gene Alias DKFZp686F03202, DKFZp686K16132, FLJ23712, FLJ25931, FLJ31060, FLJ42882, FLJ45252, KIAA1048, MGC138170, MGC164568, MGC164570

Gene Description AP2 associated kinase 1

Gene Ontology [Hyperlink](#)

Gene Summary Adaptor-related protein complex 2 (AP-2 complexes) functions during receptor-mediated endocytosis to trigger clathrin assembly, interact with membrane-bound receptors, and recruit encodytic accessory factors. This gene encodes a member of the SNF1 subfamily of Ser/Thr protein kinases. The protein interacts with and phosphorylates a subunit of the AP-2 complex, which promotes binding of AP-2 to sorting signals found in membrane-bound receptors and subsequent receptor endocytosis. Its kinase activity is stimulated by clathrin. Alternatively spliced transcript variants have been described, but their biological validity has not been determined. [provided by RefSeq]

Other Designations adaptor-associated kinase 1

Disease

- [Parkinson Disease](#)

- [Tobacco Use Disorder](#)