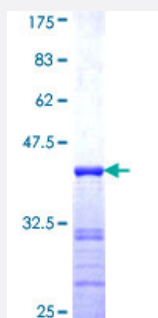


CASC3 (Human) Recombinant Protein (Q01)

Catalog # H00022794-Q01

Size 25 ug, 10 ug

Applications



Specification

| | |
|--------------------------------------|---|
| Product Description | Human CASC3 partial ORF (NP_031385, 604 a.a. - 703 a.a.) recombinant protein with GST-tag at N-terminal. |
| Sequence | VSMSPGQPPPQQLLAPTYFSAPGVMNFGNPSYPYAPGALPPPPPPHLYPNTQAPSQVYGGVTYY NPAQQQVQPKPSPRRTPQPVTIKPPPPEVVS RGSS |
| Host | Wheat Germ (in vitro) |
| Theoretical MW (kDa) | 36.74 |
| Interspecies Antigen Sequence | Mouse (97); Rat (98) |
| Preparation Method | in vitro wheat germ expression system |
| Purification | Glutathione Sepharose 4 Fast Flow |
| Quality Control Testing | 12.5% SDS-PAGE Stained with Coomassie Blue. |
| Storage Buffer | 50 mM Tris-HCl, 10 mM reduced Glutathione, pH=8.0 in the elution buffer. |
| Storage Instruction | Store at -80°C. Aliquot to avoid repeated freezing and thawing. |
| Note | Best use within three months from the date of receipt of this protein. |

Applications

- Enzyme-linked Immunoabsorbent Assay
- Western Blot (Recombinant protein)
- Antibody Production
- Protein Array

Gene Info — CASC3

Entrez GeneID [22794](#)

GeneBank Accession# [NM_007359](#)

Protein Accession# [NP_031385](#)

Gene Name CASC3

Gene Alias BTZ, MLN51

Gene Description cancer susceptibility candidate 3

Omim ID [606504](#)

Gene Ontology [Hyperlink](#)

Gene Summary The product of this gene is a core component of the exon junction complex (EJC), a protein complex that is deposited on spliced mRNAs at exon-exon junctions and functions in nonsense-mediated mRNA decay (NMD). The encoded protein binds RNA and interacts with two other EJC core components. It is predominantly located in the cytoplasm, but shuttles into the nucleus where it localizes to nuclear speckles. [provided by RefSeq]

Other Designations OTTHUMP00000164448|parents|metastatic lymph node 51