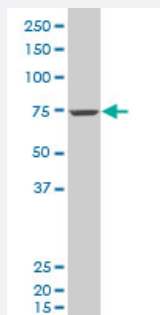


CASC3 polyclonal antibody (A01)

Catalog # H00022794-A01

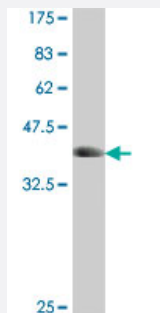
Size 50 uL

Applications



Western Blot (Cell lysate)

CASC3 polyclonal antibody (A01), Lot # 060501JCS1 Western Blot analysis of CASC3 expression in HeLa (Cat # L013V1).



Western Blot detection against Immunogen (37.11 KDa) .

Specification

Product Description	Mouse polyclonal antibody raised against a partial recombinant CASC3.
Immunogen	CASC3 (NP_031385, 604 a.a. ~ 703 a.a) partial recombinant protein with GST tag.
Sequence	VSMSPGQPPPQQLLAPTYFSAPGVMNFGNPSYPYAPGALPPPPPPHLYPNTQAPSQVYGGVTYY NPAQQQVQPKPSPRRTPQPVTIKPPPPEVVS RGSS
Host	Mouse
Reactivity	Human
Interspecies Antigen Sequence	Mouse (97); Rat (98)

Quality Control Testing

Antibody Reactive Against Recombinant Protein.
Western Blot detection against Immunogen (37.11 KDa) .

Storage Buffer

50 % glycerol

Storage Instruction

Store at -20°C or lower. Aliquot to avoid repeated freezing and thawing.

Applications

- Western Blot (Cell lysate)

CASC3 polyclonal antibody (A01), Lot # 060501JCS1 Western Blot analysis of CASC3 expression in HeLa (Cat # L013V1).

[Protocol Download](#)

- Western Blot (Recombinant protein)

[Protocol Download](#)

- ELISA

Gene Info — CASC3

Entrez GeneID

[22794](#)

GeneBank Accession#

[NM_007359](#)

Protein Accession#

[NP_031385](#)

Gene Name

CASC3

Gene Alias

BTZ, MLN51

Gene Description

cancer susceptibility candidate 3

Omim ID

[606504](#)

Gene Ontology

[Hyperlink](#)

Gene Summary

The product of this gene is a core component of the exon junction complex (EJC), a protein complex that is deposited on spliced mRNAs at exon-exon junctions and functions in nonsense-mediated mRNA decay (NMD). The encoded protein binds RNA and interacts with two other EJC core components. It is predominantly located in the cytoplasm, but shuttles into the nucleus where it localizes to nuclear speckles. [provided by RefSeq]

Other Designations

OTTHUMP00000164448|parents|metastatic lymph node 51