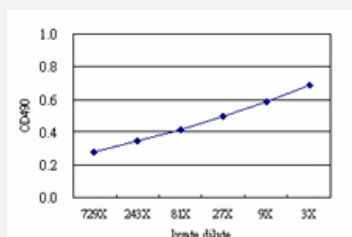


TWF2 (Human) Matched Antibody Pair

Catalog # H00011344-AP51

Size 1 Set

Applications



Sandwich ELISA detection sensitivity ranging from approximately 729x to 3x dilution of the TWF2 293T overexpression lysate (non-denatured).

Specification

Product Description	This antibody pair set comes with a matched antibody pair to detect and quantify the protein level of human TWF2.
Reactivity	Human
Interspecies Antigen Sequence	Mouse (96); Rat (96)
Quality Control Testing	Standard curve using TWF2 293T overexpression lysate (non-denatured) as an analyte. Sandwich ELISA detection sensitivity ranging from approximately 729x to 3x dilution of the TWF2 293T overexpression lysate (non-denatured).
Supplied Product	Antibody pair set content: 1. Capture antibody: mouse monoclonal anti-TWF2 (100 ug) 2. Detection antibody: rabbit purified polyclonal anti-TWF2 (50 ug) *Reagents are sufficient for at least 3-5 x 96 well plates using recommended protocols.
Storage Instruction	Store reagents of the antibody pair set at -20°C or lower. Please aliquot to avoid repeated freeze thaw cycle. Reagents should be returned to -20°C storage immediately after use.

Applications

- ELISA Pair (Transfected lysate)

[Protocol Download](#)

Gene Info — TWF2

Entrez GeneID	11344
Gene Name	TWF2
Gene Alias	A6RP, A6r, MSTP011, PTK9L
Gene Description	twinfilin, actin-binding protein, homolog 2 (Drosophila)
Omim ID	607433
Gene Ontology	Hyperlink
Gene Summary	The protein encoded by this gene was identified by its interaction with the catalytic domain of protein kinase C-zeta. The encoded protein contains an actin-binding site and an ATP-binding site. It is most closely related to twinfilin (PTK9), a conserved actin monomer-binding protein. [provided by RefSeq]
Other Designations	A6-related protein PTK9L protein tyrosine kinase 9-like (A6-related protein) protein tyrosine kinase 9-like (A6-related protein) twinfilin-like protein

Disease

- [Birth Weight](#)
- [Cardiovascular Diseases](#)
- [Diabetes Mellitus](#)
- [Edema](#)
- [Genetic Predisposition to Disease](#)
- [Glioblastoma](#)
- [Glioma](#)
- [Leukemia](#)
- [Meningeal Neoplasms](#)
- [Meningioma](#)