

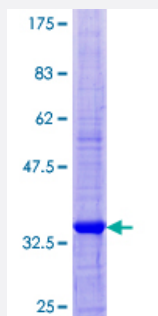
Full-Length

SCRG1 (Human) Recombinant Protein (P01)

Catalog # H00011341-P01

Size 25 ug, 10 ug

Applications



Specification

Product Description	Human SCRG1 full-length ORF (NP_009212.1, 1 a.a. - 98 a.a.) recombinant protein with GST-tag at N-terminal.
Sequence	MKLMVLVFTIGLTLLLG VQAMPANRLSCYRKILKDHNCHNLPEGVADLTQIDVNVQDHFWDGKGC EMICYCNFSELLCCPKDVFFGPKISFVIPCNNQ
Host	Wheat Germ (in vitro)
Theoretical MW (kDa)	37.5
Interspecies Antigen Sequence	Mouse (83); Rat (82)
Preparation Method	in vitro wheat germ expression system
Purification	Glutathione Sepharose 4 Fast Flow
Quality Control Testing	12.5% SDS-PAGE Stained with Coomassie Blue.
Storage Buffer	50 mM Tris-HCl, 10 mM reduced Glutathione, pH=8.0 in the elution buffer.
Storage Instruction	Store at -80°C. Aliquot to avoid repeated freezing and thawing.
Note	Best use within three months from the date of receipt of this protein.

Applications

- Enzyme-linked Immunoabsorbent Assay
- Western Blot (Recombinant protein)
- Antibody Production
- Protein Array

Gene Info — SCRG1

Entrez GeneID	11341
GeneBank Accession#	NM_007281.1
Protein Accession#	NP_009212.1
Gene Name	SCRG1
Gene Alias	MGC26468, SCRG-1
Gene Description	scrapie responsive protein 1
Omim ID	603163
Gene Ontology	Hyperlink
Gene Summary	Scrapie-responsive gene 1 is associated with neurodegenerative changes observed in transmissible spongiform encephalopathies. It may play a role in host response to prion-associated infections. The scrapie responsive protein 1 may be partly included in the membrane or secreted by the cells due to its hydrophobic N-terminus. [provided by RefSeq]
Other Designations	-