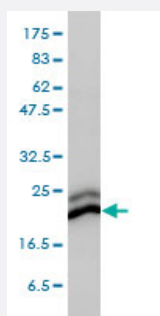


CBX3 monoclonal antibody (M01), clone 1G12-1D9

Catalog # H00011335-M01

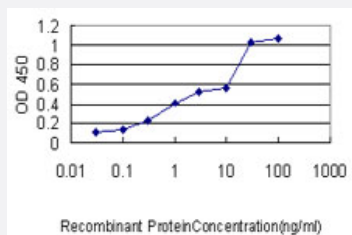
Size 100 ug

Applications



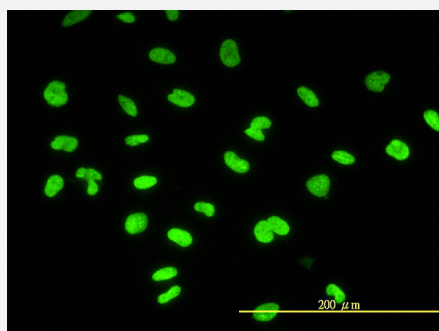
Western Blot (Cell lysate)

CBX3 monoclonal antibody (M01), clone 1G12-1D9 Western Blot analysis of CBX3 expression in HeLa (Cat # L013V1).



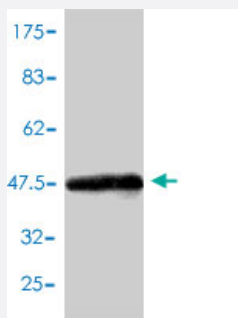
Sandwich ELISA (Recombinant protein)

Detection limit for recombinant GST tagged CBX3 is approximately 0.03ng/ml as a capture antibody.



Immunofluorescence

Immunofluorescence of monoclonal antibody to CBX3 on HeLa cell. [antibody concentration 10 ug/ml]



Western Blot detection against Immunogen (45.87 KDa) .

Specification

Product Description	Mouse monoclonal antibody raised against a full length recombinant CBX3.
Immunogen	CBX3 (AAH00954, 1 a.a. ~ 183 a.a) full-length recombinant protein with GST tag. MW of the GST tag alone is 26 KDa.
Sequence	MASNKTTLQKMGKKQNGKSKKVVEAEPEEFVVEKVLDRRVVNGKVEYFLKWKGFTDADNTWE PEENLDCPELIEAFLNSQKAGKEKDGTGRKSLSDSESDSKSKKKRDAADKPRGFARGLDPERII GATDSSGELMLLMKWKDSDEADLVLAKEANMKCPQIVAFYEERLTWHSCPEDEAQ
Host	Mouse
Reactivity	Human
Interspecies Antigen Sequence	Mouse (100); Rat (100)
Isotype	IgG2a kappa
Quality Control Testing	Antibody Reactive Against Recombinant Protein. Western Blot detection against Immunogen (45.87 KDa) .
Storage Buffer	In 1x PBS, pH 7.4
Storage Instruction	Store at -20°C or lower. Aliquot to avoid repeated freezing and thawing.

Applications

● Western Blot (Cell lysate)

CBX3 monoclonal antibody (M01), clone 1G12-1D9 Western Blot analysis of CBX3 expression in HeLa (Cat # L013V1).

[Protocol Download](#)

- Western Blot (Recombinant protein)

[Protocol Download](#)

- Sandwich ELISA (Recombinant protein)

Detection limit for recombinant GST tagged CBX3 is approximately 0.03ng/ml as a capture antibody.

[Protocol Download](#)

- ELISA

- Immunofluorescence

Immunofluorescence of monoclonal antibody to CBX3 on HeLa cell. [antibody concentration 10 ug/ml]

Gene Info — CBX3

Entrez GeneID [11335](#)

GeneBank Accession# [BC000954](#)

Protein Accession# [AAH00954](#)

Gene Name CBX3

Gene Alias HECH, HP1-GAMMA, HP1Hs-gamma

Gene Description chromobox homolog 3 (HP1 gamma homolog, Drosophila)

Omim ID [604477](#)

Gene Ontology [Hyperlink](#)

Gene Summary At the nuclear envelope, the nuclear lamina and heterochromatin are adjacent to the inner nuclear membrane. The protein encoded by this gene binds DNA and is a component of heterochromatin. This protein also can bind lamin B receptor, an integral membrane protein found in the inner nuclear membrane. The dual binding functions of the encoded protein may explain the association of heterochromatin with the inner nuclear membrane. Two transcript variants encoding the same protein but differing in the 5' UTR, have been found for this gene. [provided by RefSeq]

Other Designations HP1 gamma homolog|OTTHUMP00000024529|OTTHUMP00000122519|chromobox homolog 3|heterochromatin protein HP1 gamma|heterochromatin-like protein 1

Publication Reference

- [DNA Topoisomerase III Alpha Regulates p53-Mediated Tumor Suppression.](#)

Hsieh MY, Fan JR, Chang HW, Chen HC, Shen TL, Teng SC, Yeh YH, Li TK.

Clinical Cancer Research 2014 Mar; 20(6):1489.

- [Loss of the candidate tumor suppressor BTG3 triggers acute cellular senescence via the ERK-JMJD3-p16\(INK4a\) signaling axis.](#)

Lin TY, Cheng YC, Yang HC, Lin WC, Wang CC, Lai PL, Shieh SY.

Oncogene 2012 Jul; 31(27):3287.

Application: IF, Human, IMR90 cells