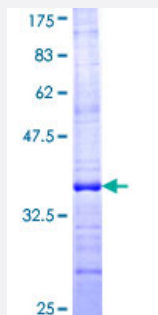


TUSC2 (Human) Recombinant Protein (Q01)

Catalog # H00011334-Q01

Size 25 ug, 10 ug

Applications



Specification

| | |
|--------------------------------------|--|
| Product Description | Human TUSC2 partial ORF (NP_009206, 31 a.a. - 110 a.a.) recombinant protein with GST-tag at N-terminal. |
| Sequence | ALVRPRGRAVPPFVFTRRGSMFYDEDGDLAHEFYEETIVTKNGQKRAKLRRVHKNLIPQGNKLDH PRIHVDFPVILYEV |
| Host | Wheat Germ (in vitro) |
| Theoretical MW (kDa) | 34.54 |
| Interspecies Antigen Sequence | Mouse (92); Rat (93) |
| Preparation Method | in vitro wheat germ expression system |
| Purification | Glutathione Sepharose 4 Fast Flow |
| Quality Control Testing | 12.5% SDS-PAGE Stained with Coomassie Blue. |
| Storage Buffer | 50 mM Tris-HCl, 10 mM reduced Glutathione, pH=8.0 in the elution buffer. |
| Storage Instruction | Store at -80°C. Aliquot to avoid repeated freezing and thawing. |
| Note | Best use within three months from the date of receipt of this protein. |

Applications

- Enzyme-linked Immunoabsorbent Assay
- Western Blot (Recombinant protein)
- Antibody Production
- Protein Array

Gene Info — TUSC2

| | |
|---------------------|---|
| Entrez GeneID | 11334 |
| GeneBank Accession# | NM_007275 |
| Protein Accession# | NP_009206 |
| Gene Name | TUSC2 |
| Gene Alias | C3orf11, FUS1, PAP, PDAP2 |
| Gene Description | tumor suppressor candidate 2 |
| Omim ID | 607052 |
| Gene Ontology | Hyperlink |
| Gene Summary | This gene is a highly conserved lung cancer candidate gene. No other information about this gene is currently available. [provided by RefSeq] |
| Other Designations | PDGFA associated protein 2 |