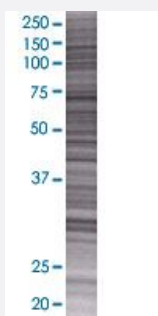


# CD300A 293T Cell Transient Overexpression Lysate(Denatured)

Catalog # H00011314-T02

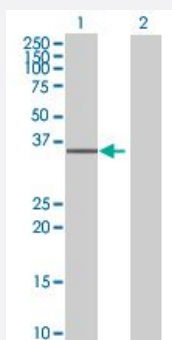
Size 100 uL

## Applications



### SDS-PAGE Gel

CD300A transfected lysate.



### Western Blot

Lane 1: CD300A transfected lysate ( 33 KDa)

Lane 2: Non-transfected lysate.

## Specification

Transfected Cell Line	293T
Plasmid	pCMV-CD300A full-length
Host	Human
Theoretical MW (kDa)	33
Interspecies Antigen Sequence	Mouse (46); Rat (51)

**Quality Control Testing**

Transient overexpression cell lysate was tested with Anti-CD300A antibody ([H00011314-B02](#)) by Western Blots.  
SDS-PAGE Gel  
CD300A transfected lysate.  
Western Blot  
Lane 1: CD300A transfected lysate ( 33 KDa)  
Lane 2: Non-transfected lysate.

**Storage Buffer**

1X Sample Buffer (50 mM Tris-HCl, 2% SDS, 10% glycerol, 300 mM 2-mercaptoethanol, 0.01% Bromophenol blue)

**Storage Instruction**

Store at -80°C. Aliquot to avoid repeated freezing and thawing.

## Applications

- Western Blot

## Gene Info — CD300A

**Entrez GeneID**[11314](#)**GeneBank Accession#**[NM\\_007261.2](#)**Protein Accession#**[NP\\_009192.2](#)**Gene Name**

CD300A

**Gene Alias**

CMRF-35-H9, CMRF-35H, CMRF35H, CMRF35H9, IGSF12, IRC1, IRC2, IRp60

**Gene Description**

CD300a molecule

**Omim ID**[606790](#)**Gene Ontology**[Hyperlink](#)**Gene Summary**

The CMRF35 antigen (CMRF35A; MIM 606786), which was identified by reactivity with a monoclonal antibody, is present on monocytes, neutrophils, and some T and B lymphocytes. CMRF35H is recognized by the same antibody and is distinct from CMRF35 (Green et al., 1998 [PubMed 9701027]).[supplied by OMIM]

**Other Designations**

CD300a antigen|CMRF35H leukocyte immunoglobulin-like receptor|leukocyte membrane antigen