

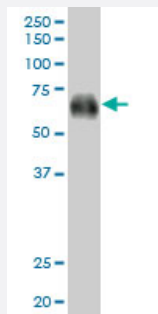
MaxPab®

CD300A purified MaxPab mouse polyclonal antibody (B01P)

Catalog # H00011314-B01P

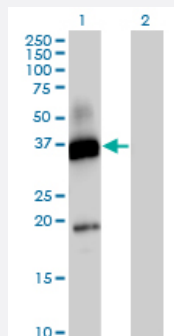
Size 50 ug

Applications



Western Blot (Tissue lysate)

CD300A MaxPab polyclonal antibody. Western Blot analysis of CD300A expression in human spleen.



Western Blot (Transfected lysate)

Western Blot analysis of CD300A expression in transfected 293T cell line ([H00011314-T01](#)) by CD300A MaxPab polyclonal antibody.

Lane 1: CD300A transfected lysate(33 KDa).

Lane 2: Non-transfected lysate.

Specification

Product Description

Mouse polyclonal antibody raised against a full-length human CD300A protein.

Immunogen

CD300A (AAH32352, 1 a.a. ~ 299 a.a) full-length human protein.

Sequence

MWLPWALLLLWVPGCFALSKCRTVAGPVGGSLSVQCPYEKEHRTLNKYWCRPPQIFLCDKIVET
KGSAGKRNGRVSIRDSPANLSFTVTLENLTEEDAGTYWCGVDTPWLRDFHDPVVEVEVSVFPAS
TSMTPASITAAKTSTITAFPPVSSTTLFAVGATHSASIQEETEEVVNSQLPLLLSLLALLLLLLLVGAS
LLAWRMFQKWIKAGDHSELSQNPQAATQSELHYANLELLMWPLQEKPAPPREVEVEYSTVAS
PREELHYASVVFDSNTNRIAAQRPREEEPDSDYSVIRKT

Host

Mouse

Reactivity	Human
Interspecies Antigen Sequence	Mouse (46); Rat (51)
Quality Control Testing	Antibody reactive against mammalian transfected lysate.
Storage Buffer	In 1x PBS, pH 7.4
Storage Instruction	Store at -20°C or lower. Aliquot to avoid repeated freezing and thawing.

Applications

- Western Blot (Tissue lysate)

CD300A MaxPab polyclonal antibody. Western Blot analysis of CD300A expression in human spleen.

[Protocol Download](#)

- Western Blot (Transfected lysate)

Western Blot analysis of CD300A expression in transfected 293T cell line ([H00011314-T01](#)) by CD300A MaxPab polyclonal antibody.

Lane 1: CD300A transfected lysate(33 KDa).

Lane 2: Non-transfected lysate.

[Protocol Download](#)

Gene Info — CD300A

Entrez GeneID	11314
GeneBank Accession#	BC032352
Protein Accession#	AAH32352
Gene Name	CD300A
Gene Alias	CMRF-35-H9, CMRF-35H, CMRF35H, CMRF35H9, IGSF12, IRC1, IRC2, IRp60
Gene Description	CD300a molecule
Omim ID	606790
Gene Ontology	Hyperlink

Gene Summary

The CMRF35 antigen (CMRF35A; MIM 606786), which was identified by reactivity with a monoclonal antibody, is present on monocytes, neutrophils, and some T and B lymphocytes. CMRF35H is recognized by the same antibody and is distinct from CMRF35 (Green et al., 1998 [PubMed 9701027]).[supplied by OMIM]

Other Designations

CD300a antigen|CMRF35H leukocyte immunoglobulin-like receptor|leukocyte membrane antigen