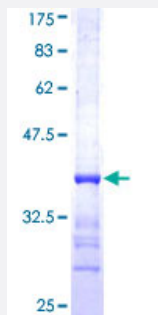


# LYPLA2 (Human) Recombinant Protein (Q01)

Catalog # H00011313-Q01

Size 25 ug, 10 ug

## Applications



## Specification

<b>Product Description</b>	Human LYPLA2 partial ORF ( NP_009191, 144 a.a. - 231 a.a.) recombinant protein with GST-tag at N-terminal.
<b>Sequence</b>	ALSCWLPLHRAFPQAANGSAKDLAILQCHGELDPMVPVRFGALTAEKLRSVVTPARVQFKTYPG VMHSSCPQEMAAVKEFLEKLLPPV
<b>Host</b>	Wheat Germ (in vitro)
<b>Theoretical MW (kDa)</b>	35.42
<b>Interspecies Antigen Sequence</b>	Mouse (99); Rat (98)
<b>Preparation Method</b>	<a href="#">in vitro wheat germ expression system</a>
<b>Purification</b>	Glutathione Sepharose 4 Fast Flow
<b>Quality Control Testing</b>	12.5% SDS-PAGE Stained with Coomassie Blue.
<b>Storage Buffer</b>	50 mM Tris-HCl, 10 mM reduced Glutathione, pH=8.0 in the elution buffer.
<b>Storage Instruction</b>	Store at -80°C. Aliquot to avoid repeated freezing and thawing.
<b>Note</b>	Best use within three months from the date of receipt of this protein.

## Applications

- Enzyme-linked Immunoabsorbent Assay
- Western Blot (Recombinant protein)
- Antibody Production
- Protein Array

## Gene Info — LYPLA2

Entrez GeneID [11313](#)

GeneBank Accession# [NM\\_007260](#)

Protein Accession# [NP\\_009191](#)

Gene Name LYPLA2

Gene Alias APT-2, DJ886K2.4

Gene Description lysophospholipase II

Gene Ontology [Hyperlink](#)

**Gene Summary** Lysophospholipases are enzymes that act on biological membranes to regulate the multifunctional lysophospholipids. There are alternatively spliced transcript variants described for this gene but the full length nature is not known yet. [provided by RefSeq]

**Other Designations** OTTHUMP00000002999|OTTHUMP00000044831|acyl-protein thioesterase

## Pathway

- [Glycerophospholipid metabolism](#)