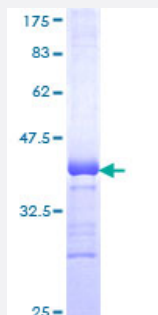


POU6F2 (Human) Recombinant Protein (Q01)

Catalog # H00011281-Q01

Size 25 ug, 10 ug

Applications



Specification

Product Description	Human POU6F2 partial ORF (NP_009183, 2 a.a. - 87 a.a.) recombinant protein with GST-tag at N-terminal.
Sequence	IAGQVSKPLLSVRSEMNAELRGEDKAATSDSELNEPLLAPVESNDSSEDTPSKLFGARGNPALSD PGTPDQHQASQTHPPFPVGPQP
Host	Wheat Germ (in vitro)
Theoretical MW (kDa)	35.2
Preparation Method	in vitro wheat germ expression system
Purification	Glutathione Sepharose 4 Fast Flow
Quality Control Testing	12.5% SDS-PAGE Stained with Coomassie Blue.
Storage Buffer	50 mM Tris-HCl, 10 mM reduced Glutathione, pH=8.0 in the elution buffer.
Storage Instruction	Store at -80°C. Aliquot to avoid repeated freezing and thawing.
Note	Best use within three months from the date of receipt of this protein.

Applications

- Enzyme-linked Immunoabsorbent Assay
- Western Blot (Recombinant protein)
- Antibody Production
- Protein Array

Gene Info — POU6F2

Entrez GeneID	11281
GeneBank Accession#	NM_007252
Protein Accession#	NP_009183
Gene Name	POU6F2
Gene Alias	RPF-1, WT5, WTSL
Gene Description	POU class 6 homeobox 2
Omim ID	601583 609062
Gene Ontology	Hyperlink
Gene Summary	POU6F2 is a member of a gene family characterized by the presence of a bipartite DNA-binding domain, consisting of a POU-specific domain and a POU heterodomain, separated by a variable polylinker. POU domain family members are transcriptional regulators, many of which show highly restricted patterns of expression and are known to control cell type-specific differentiation pathways (see review by Phillips and Luisi, 2000 [PubMed 11183772]).[supplied by OMIM]
Other Designations	POU domain, class 6, transcription factor 2 Wilms tumor suppressor locus retina-derived POU-domain factor-1

Disease

- [Tobacco Use Disorder](#)