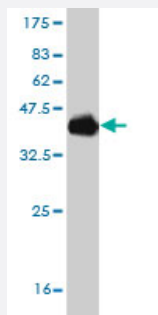


POU6F2 monoclonal antibody (M08), clone 8F9

Catalog # H00011281-M08

Size 100 ug

Applications



Western Blot detection against Immunogen (35.2 KDa) .

Specification

Product Description	Mouse monoclonal antibody raised against a partial recombinant POU6F2.
Immunogen	POU6F2 (NP_009183, 2 a.a. ~ 87 a.a) partial recombinant protein with GST tag. MW of the GST tag alone is 26 KDa.
Sequence	IAGQVSKPLLSVRSEMNAELRGEDKAATSDSELNEPLLAPVESNDSEDTPSKLFGARGNPALSD PGTPDQHQASQTHPPFPVGPQP
Host	Mouse
Reactivity	Human
Isotype	IgG2a Kappa
Quality Control Testing	Antibody Reactive Against Recombinant Protein. Western Blot detection against Immunogen (35.2 KDa) .
Storage Buffer	In 1x PBS, pH 7.4
Storage Instruction	Store at -20°C or lower. Aliquot to avoid repeated freezing and thawing.

Applications

- Western Blot (Recombinant protein)

[Protocol Download](#)

- ELISA

Gene Info — POU6F2

Entrez GeneID [11281](#)

GeneBank Accession# [NM_007252](#)

Protein Accession# [NP_009183](#)

Gene Name POU6F2

Gene Alias RPF-1, WT5, WTSL

Gene Description POU class 6 homeobox 2

Omim ID [601583 609062](#)

Gene Ontology [Hyperlink](#)

Gene Summary POU6F2 is a member of a gene family characterized by the presence of a bipartite DNA-binding domain, consisting of a POU-specific domain and a POU heterodomain, separated by a variable polylinker. POU domain family members are transcriptional regulators, many of which show highly restricted patterns of expression and are known to control cell type-specific differentiation pathways (see review by Phillips and Luisi, 2000 [PubMed 11183772]).[supplied by OMIM]

Other Designations POU domain, class 6, transcription factor 2|Wilms tumor suppressor locus|retina-derived POU-domain factor-1

Disease

- [Tobacco Use Disorder](#)