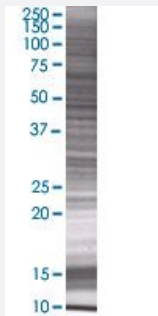


# KLF8 293T Cell Transient Overexpression Lysate(Denatured)

Catalog # H00011279-T01

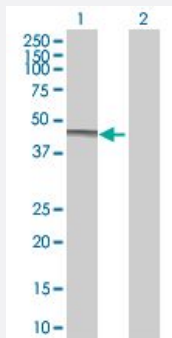
Size 100 uL

## Applications



### SDS-PAGE Gel

KLF8 transfected lysate.



### Western Blot

Lane 1: KLF8 transfected lysate ( 39.6 KDa)

Lane 2: Non-transfected lysate.

## Specification

|                               |                       |
|-------------------------------|-----------------------|
| Transfected Cell Line         | 293T                  |
| Plasmid                       | pCMV-KLF8 full-length |
| Host                          | Human                 |
| Theoretical MW (kDa)          | 39.6                  |
| Interspecies Antigen Sequence | Mouse (83)            |

**Quality Control Testing**

Transient overexpression cell lysate was tested with Anti-KLF8 antibody ([H00011279-B01](#)) by Western Blots.  
SDS-PAGE Gel  
KLF8 transfected lysate.  
Western Blot  
Lane 1: KLF8 transfected lysate ( 39.6 KDa)  
Lane 2: Non-transfected lysate.

**Storage Buffer**

1X Sample Buffer (50 mM Tris-HCl, 2% SDS, 10% glycerol, 300 mM 2-mercaptoethanol, 0.01% Bromophenol blue)

**Storage Instruction**

Store at -80°C. Aliquot to avoid repeated freezing and thawing.

## Applications

- Western Blot

## Gene Info — KLF8

**Entrez GeneID**[11279](#)**GeneBank Accession#**[NM\\_007250.3](#)**Protein Accession#**[NP\\_009181.2](#)**Gene Name**

KLF8

**Gene Alias**

BKLF3, DKFZp686O08126, DXS741, MGC138314, ZNF741

**Gene Description**

Kruppel-like factor 8

**Omim ID**[300286](#)**Gene Ontology**[Hyperlink](#)**Gene Summary**

This gene encodes a protein which is a member of the Sp/KLF family of transcription factors. Members of this family contain a C-terminal DNA-binding domain with three Kruppel-like zinc fingers. The encoded protein is thought to play an important role in the regulation of epithelial to mesenchymal transition, a process which occurs normally during development but also during metastasis. A pseudogene has been identified on chromosome 16. Alternative splicing results in multiple transcript variants. [provided by RefSeq]

**Other Designations**

zinc finger protein 741

## Disease

- [Diabetes Mellitus](#)
- [Genetic Predisposition to Disease](#)