

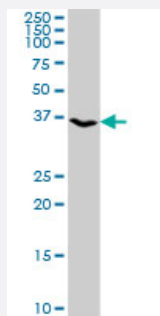
MaxPab®

KLF8 purified MaxPab rabbit polyclonal antibody (D01P)

Catalog # H00011279-D01P

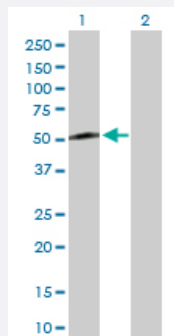
Size 100 ug

Applications



Western Blot (Tissue lysate)

KLF8 MaxPab rabbit polyclonal antibody. Western Blot analysis of KLF8 expression in human colon.



Western Blot (Transfected lysate)

Western Blot analysis of KLF8 expression in transfected 293T cell line ([H00011279-T01](#)) by KLF8 MaxPab polyclonal antibody.

Lane 1: KLF8 transfected lysate(39.30 KDa).

Lane 2: Non-transfected lysate.

Specification

Product Description

Rabbit polyclonal antibody raised against a full-length human KLF8 protein.

Immunogen

KLF8 (NP_009181.2, 1 a.a. ~ 359 a.a) full-length human protein.

Sequence

MVDMDKLIINNLEVQLNSEGGSMQVFKQVTASVRNRDPPEIEYRSNMTSPTLLDANPMENPALFN
DIKIEPPEELLASDFSLPQVEPVDLSFHKPKAPLQPASMLQAPIRPPKPQSSPQTLVVSTSTSDM
STSANIPTVLTPGSVL TSSQSTGSQQILHVIHTIPSVSLPNKMGGGLKTIPVVVQSLPMVYTTL PADGG
PAAITVPLIGGDGKNAGSVKVDPTSMSPLEIPSDSEESTIESGSSALQSLQGLQQEPAAMAQMQG
EESLDLKRRIHQCDFAGCSKVYTKSSHLKAHRRRIHTGEKPYKCTWDGCSWKFARSDDELTRHFR
KHTGIKPFRCCTDCNRSFSRSDHLSLHRRRHDTM

Host

Rabbit

Reactivity	Human
Interspecies Antigen Sequence	Mouse (83)
Quality Control Testing	Antibody reactive against mammalian transfected lysate.
Storage Buffer	In 1x PBS, pH 7.4
Storage Instruction	Store at -20°C or lower. Aliquot to avoid repeated freezing and thawing.

Applications

- Western Blot (Tissue lysate)

KLF8 MaxPab rabbit polyclonal antibody. Western Blot analysis of KLF8 expression in human colon.

[Protocol Download](#)

- Western Blot (Transfected lysate)

Western Blot analysis of KLF8 expression in transfected 293T cell line ([H00011279-T01](#)) by KLF8 MaxPab polyclonal antibody.

Lane 1: KLF8 transfected lysate(39.30 KDa).

Lane 2: Non-transfected lysate.

[Protocol Download](#)

Gene Info — KLF8

Entrez GeneID	11279
GeneBank Accession#	NM_007250.3
Protein Accession#	NP_009181.2
Gene Name	KLF8
Gene Alias	BKLF3, DKFZp686O08126, DXS741, MGC138314, ZNF741
Gene Description	Kruppel-like factor 8
Omim ID	300286
Gene Ontology	Hyperlink

Gene Summary

This gene encodes a protein which is a member of the Sp/KLF family of transcription factors. Members of this family contain a C-terminal DNA-binding domain with three Kruppel-like zinc fingers. The encoded protein is thought to play an important role in the regulation of epithelial to mesenchymal transition, a process which occurs normally during development but also during metastasis. A pseudogene has been identified on chromosome 16. Alternative splicing results in multiple transcript variants. [provided by RefSeq]

Other Designations

zinc finger protein 741

Disease

- [Diabetes Mellitus](#)
- [Genetic Predisposition to Disease](#)