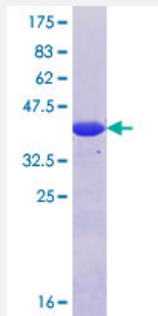


# AP1GBP1 (Human) Recombinant Protein (Q01)

Catalog # H00011276-Q01

Size 25 ug, 10 ug

## Applications



## Specification

<b>Product Description</b>	Human AP1GBP1 partial ORF ( NP_009178.3, 456 a.a. - 555 a.a.) recombinant protein with GST-tag at N-terminal.
<b>Sequence</b>	DDFQDFQDASKGSLDDSFDFQELPASSKTSNSQHGNSAPSLLMPLPGTKALPSMDKYAVFK GIAADKSSSENTVPPGDPGDKYSAFRELEQTAENKPLG
<b>Host</b>	Wheat Germ (in vitro)
<b>Theoretical MW (kDa)</b>	36.74
<b>Interspecies Antigen Sequence</b>	Mouse (80); Rat (81)
<b>Preparation Method</b>	<a href="#">in vitro wheat germ expression system</a>
<b>Purification</b>	Glutathione Sepharose 4 Fast Flow
<b>Quality Control Testing</b>	12.5% SDS-PAGE Stained with Coomassie Blue.
<b>Storage Buffer</b>	50 mM Tris-HCl, 10 mM reduced Glutathione, pH=8.0 in the elution buffer.
<b>Storage Instruction</b>	Store at -80°C. Aliquot to avoid repeated freezing and thawing.
<b>Note</b>	Best use within three months from the date of receipt of this protein.

## Applications

- Enzyme-linked Immunoabsorbent Assay
- Western Blot (Recombinant protein)
- Antibody Production
- Protein Array

## Gene Info — AP1GBP1

Entrez GeneID [11276](#)

GeneBank Accession# [NM\\_007247](#)

Protein Accession# [NP\\_009178.3](#)

Gene Name AP1GBP1

Gene Alias MGC104959, SYNG

Gene Description AP1 gamma subunit binding protein 1

Omim ID [607291](#)

Gene Ontology [Hyperlink](#)

**Gene Summary** This gene encodes a protein that interacts with the gamma subunit of AP1 clathrin-adaptor complex. The AP1 complex is located at the trans-Golgi network and associates specific proteins with clathrin-coated vesicles. This encoded protein may act to connect the AP1 complex to other proteins. Alternatively spliced transcript variants that encode different isoforms have been described for this gene. [provided by RefSeq]

**Other Designations** adaptor-related protein complex 1 gamma subunit-binding protein 1|gamma-synergin