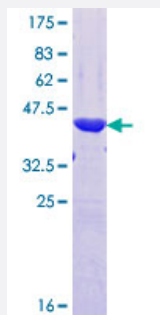


PRR4 (Human) Recombinant Protein (Q01)

Catalog # H00011272-Q01

Size 25 ug, 10 ug

Applications



Specification

Product Description	Human PRR4 partial ORF (NP_009175.1, 17 a.a. - 116 a.a.) recombinant protein with GST-tag at N-terminal.
Sequence	QSTDNDVNYEDFTFTIPDVEDSSQRPDQGPQRPPPEGLLPKPPGDSGNQDDGPQQRPPKPGG HHRHPPPPPFQNNQQRPPQGRGHRQLSLPRFPSVSLQEAS
Host	Wheat Germ (in vitro)
Theoretical MW (kDa)	36.74
Preparation Method	in vitro wheat germ expression system
Purification	Glutathione Sepharose 4 Fast Flow
Quality Control Testing	12.5% SDS-PAGE Stained with Coomassie Blue.
Storage Buffer	50 mM Tris-HCl, 10 mM reduced Glutathione, pH=8.0 in the elution buffer.
Storage Instruction	Store at -80°C. Aliquot to avoid repeated freezing and thawing.
Note	Best use within three months from the date of receipt of this protein.

Applications

- Enzyme-linked Immunoabsorbent Assay
- Western Blot (Recombinant protein)
- Antibody Production
- Protein Array

Gene Info — PRR4

Entrez GeneID [11272](#)

GeneBank Accession# [NM_007244](#)

Protein Accession# [NP_009175.1](#)

Gene Name PRR4

Gene Alias DKFZp779L1763, LPRP, PROL4

Gene Description proline rich 4 (lacrimal)

Omim ID [605359](#)

Gene Ontology [Hyperlink](#)

Gene Summary Lacrimal proline rich protein is a member of the proline-rich protein family which lacks a conserved repetitive domain. It may have a role in protective functions in the eye. Two alternatively spliced transcript variants that encode different proteins have been described for this gene. [provided by RefSeq]

Other Designations lacrimal proline rich protein|nasopharyngeal carcinoma-associated proline rich 4|proline-rich polypeptide 4

Disease

- [Tobacco Use Disorder](#)