

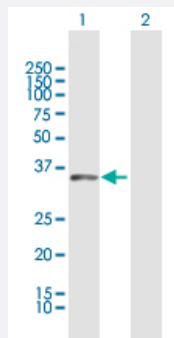
MaxPab®

# DUSP12 MaxPab rabbit polyclonal antibody (D01)

Catalog # H00011266-D01

Size 100 uL

## Applications

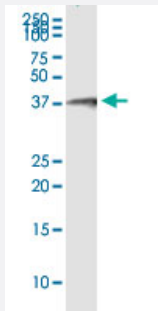


### Western Blot (Transfected lysate)

Western Blot analysis of DUSP12 expression in transfected 293T cell line ([H00011266-T01](#)) by DUSP12 MaxPab polyclonal antibody.

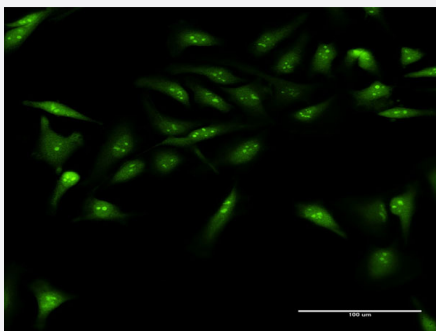
Lane 1: DUSP12 transfected lysate(37.7 KDa).

Lane 2: Non-transfected lysate.



### Immunoprecipitation

Immunoprecipitation of DUSP12 transfected lysate using anti-DUSP12 MaxPab rabbit polyclonal antibody and Protein A Magnetic Bead, and immunoblotted with DUSP12 purified MaxPab mouse polyclonal antibody (B01P) ([H00011266-B01P](#)).



### Immunofluorescence

Immunofluorescence of purified MaxPab antibody to DUSP12 on HeLa cell. [antibody concentration 20 ug/ml]

## Specification

### Product Description

Rabbit polyclonal antibody raised against a full-length human DUSP12 protein.

Immunogen	DUSP12 (NP_009171.1, 1 a.a. ~ 340 a.a) full-length human protein.
Sequence	MLEAPGPSDGCELSNPSASRVSCAGQMLEVQPGLYFGGAAVAEPDHLREAGITAVLTVDSEE PSFKAGPGVEDLWRLFVPALDKPETDLLSHLDRCVAFIGQARAEGRAVLVHCHAGVSRVAIITA FLMKTDQLPFEKAYEKLQILKPEAKMNEGFEWQLKLYQAMGYEVDTS SAIKQYRLQKVTEKYPE LQNL PQELFAVDPTTVSQGLKDEVLYKCRKCRSLFRSSSILDHREGSGPIAFAHKRMT PSSMLT TGRQAQCTSYFIEPVQWMESALLGVMDGQLLCPKCSAKLGSFNWYGEQCSCGRWITPAFQIHKN RVDEM KILPVLGSQTGKI
Host	Rabbit
Reactivity	Human
Interspecies Antigen Sequence	Mouse (83); Rat (82)
Quality Control Testing	Antibody reactive against mammalian transfected lysate.
Storage Buffer	No additive
Storage Instruction	Store at -20°C or lower. Aliquot to avoid repeated freezing and thawing.

## Applications

- Western Blot (Transfected lysate)

Western Blot analysis of DUSP12 expression in transfected 293T cell line ([H00011266-T01](#)) by DUSP12 MaxPab polyclonal antibody.

Lane 1: DUSP12 transfected lysate(37.7 KDa).

Lane 2: Non-transfected lysate.

[Protocol Download](#)

- Immunoprecipitation

Immunoprecipitation of DUSP12 transfected lysate using anti-DUSP12 MaxPab rabbit polyclonal antibody and Protein A Magnetic Bead, and immunoblotted with DUSP12 purified MaxPab mouse polyclonal antibody (B01P) ([H00011266-B01P](#)).

[Protocol Download](#)

- Immunofluorescence

Immunofluorescence of purified MaxPab antibody to DUSP12 on HeLa cell. [antibody concentration 20 ug/ml]

## Gene Info — DUSP12

Entrez GeneID

[11266](#)

GeneBank Accession#	<a href="#">NM_007240.1</a>
Protein Accession#	<a href="#">NP_009171.1</a>
Gene Name	DUSP12
Gene Alias	DUSP1, YVH1
Gene Description	dual specificity phosphatase 12
Omim ID	<a href="#">604835</a>
Gene Ontology	<a href="#">Hyperlink</a>
Gene Summary	<p>The protein encoded by this gene is a member of the dual specificity protein phosphatase subfamily. These phosphatases inactivate their target kinases by dephosphorylating both the phosphoserine/threonine and phosphotyrosine residues. They negatively regulate members of the mitogen-activated protein (MAP) kinase superfamily (MAPK/ERK, SAPK/JNK, p38), which is associated with cellular proliferation and differentiation. Different members of the family of dual specificity phosphatases show distinct substrate specificities for various MAP kinases, different tissue distribution and subcellular localization, and different modes of inducibility of their expression by extracellular stimuli. This gene product is the human ortholog of the <i>Saccharomyces cerevisiae</i> YVH1 protein tyrosine phosphatase. It is localized predominantly in the nucleus, and is novel in that it contains, and is regulated by a zinc finger domain. [provided by RefSeq]</p>
Other Designations	OTTHUMP00000032494 YVH1 protein-tyrosine phosphatase ortholog serine/threonine specific protein phosphatase

## Disease

- [Diabetes Mellitus](#)
- [Genetic Predisposition to Disease](#)