

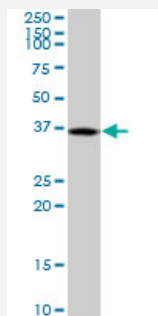
MaxPab®

DUSP12 purified MaxPab mouse polyclonal antibody (B01P)

Catalog # H00011266-B01P

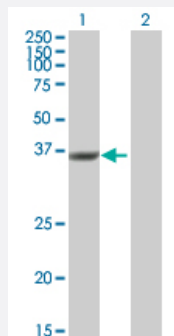
Size 50 ug

Applications



Western Blot (Cell lysate)

DUSP12 MaxPab polyclonal antibody. Western Blot analysis of DUSP12 expression in Hela S3 NE.



Western Blot (Transfected lysate)

Western Blot analysis of DUSP12 expression in transfected 293T cell line ([H00011266-T01](#)) by DUSP12 MaxPab polyclonal antibody.

Lane 1: DUSP12 transfected lysate(37.4 KDa).

Lane 2: Non-transfected lysate.

Specification

Product Description

Mouse polyclonal antibody raised against a full-length human DUSP12 protein.

Immunogen

DUSP12 (NP_009171.1, 1 a.a. ~ 340 a.a) full-length human protein.

Sequence

MLEAPGPSDGCESNPSASRVSCAGQMLEVQPGLYFGGAAVAEPDHLREAGITAVLTVDSEE
PSFKAGPGVEDLWRLFVPALDKPETDLLSHLDRCVAFIGQARAEGRAVLVHCHAGVSRVVAITA
FLMKTDQLPFEKAYEKLQILKPEAKMNEGFQWQLKLYQAMGYEVDTSAYKQYRLQKVTEKYPE
LQNL PQELFAVDPTTVSQGLKDEVLYKCRKCRSLFRSSSILDHREGSGPIAFAHKRMTPSSMLT
TGRQAQCTSYFIEPVQWMESALLGVMDGQLLCPKCSAKLGSFNWYGEQCSCGRWITPAFQIHKN
RVDEM KILPVLGSQTGKI

Host

Mouse

Reactivity	Human
Interspecies Antigen Sequence	Mouse (83); Rat (82)
Quality Control Testing	Antibody reactive against mammalian transfected lysate.
Storage Buffer	In 1x PBS, pH 7.4
Storage Instruction	Store at -20°C or lower. Aliquot to avoid repeated freezing and thawing.

Applications

- Western Blot (Cell lysate)

DUSP12 MaxPab polyclonal antibody. Western Blot analysis of DUSP12 expression in Hela S3 NE.

[Protocol Download](#)

- Western Blot (Transfected lysate)

Western Blot analysis of DUSP12 expression in transfected 293T cell line ([H00011266-T01](#)) by DUSP12 MaxPab polyclonal antibody.

Lane 1: DUSP12 transfected lysate(37.4 KDa).

Lane 2: Non-transfected lysate.

[Protocol Download](#)

Gene Info — DUSP12

Entrez GeneID	11266
GeneBank Accession#	NM_007240.1
Protein Accession#	NP_009171.1
Gene Name	DUSP12
Gene Alias	DUSP1, YVH1
Gene Description	dual specificity phosphatase 12
Omim ID	604835
Gene Ontology	Hyperlink

Gene Summary

The protein encoded by this gene is a member of the dual specificity protein phosphatase subfamily. These phosphatases inactivate their target kinases by dephosphorylating both the phosphoserine/threonine and phosphotyrosine residues. They negatively regulate members of the mitogen-activated protein (MAP) kinase superfamily (MAPK/ERK, SAPK/JNK, p38), which is associated with cellular proliferation and differentiation. Different members of the family of dual specificity phosphatases show distinct substrate specificities for various MAP kinases, different tissue distribution and subcellular localization, and different modes of inducibility of their expression by extracellular stimuli. This gene product is the human ortholog of the *Saccharomyces cerevisiae* YVH1 protein tyrosine phosphatase. It is localized predominantly in the nucleus, and is novel in that it contains, and is regulated by a zinc finger domain. [provided by RefSeq]

Other Designations

OTTHUMP00000032494|YVH1 protein-tyrosine phosphatase ortholog|serine/threonine specific protein phosphatase

Disease

- [Diabetes Mellitus](#)
- [Genetic Predisposition to Disease](#)