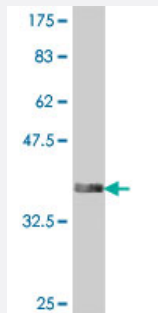


DUSP12 polyclonal antibody (A01)

Catalog # H00011266-A01

Size 50 uL

Applications



Western Blot detection against Immunogen (38.21 KDa) .

Specification

Product Description	Mouse polyclonal antibody raised against a partial recombinant DUSP12.
Immunogen	DUSP12 (NP_009171, 231 a.a. ~ 340 a.a) partial recombinant protein with GST tag.
Sequence	SSSILDHREGSGPIAFAHKRMTPSSMLTTGRQAQCTSYFIEPVQWMESALLGVMDGQLLCPKCS AKLGSFNWYGEQCSCGRWITPAFQIHKNRVDEMkilPVLGSQTGKI
Host	Mouse
Reactivity	Human
Interspecies Antigen Sequence	Mouse (83); Rat (82)
Quality Control Testing	Antibody Reactive Against Recombinant Protein. Western Blot detection against Immunogen (38.21 KDa) .
Storage Buffer	50 % glycerol
Storage Instruction	Store at -20°C or lower. Aliquot to avoid repeated freezing and thawing.

Applications

- Western Blot (Recombinant protein)

[Protocol Download](#)

- ELISA

Gene Info — DUSP12

Entrez GeneID [11266](#)

GeneBank Accession# [NM_007240](#)

Protein Accession# [NP_009171](#)

Gene Name DUSP12

Gene Alias DUSP1, YVH1

Gene Description dual specificity phosphatase 12

Omim ID [604835](#)

Gene Ontology [Hyperlink](#)

Gene Summary

The protein encoded by this gene is a member of the dual specificity protein phosphatase subfamily. These phosphatases inactivate their target kinases by dephosphorylating both the phosphoserine/threonine and phosphotyrosine residues. They negatively regulate members of the mitogen-activated protein (MAP) kinase superfamily (MAPK/ERK, SAPK/JNK, p38), which is associated with cellular proliferation and differentiation. Different members of the family of dual specificity phosphatases show distinct substrate specificities for various MAP kinases, different tissue distribution and subcellular localization, and different modes of inducibility of their expression by extracellular stimuli. This gene product is the human ortholog of the *Saccharomyces cerevisiae* YVH1 protein tyrosine phosphatase. It is localized predominantly in the nucleus, and is novel in that it contains, and is regulated by a zinc finger domain. [provided by RefSeq]

Other Designations OTTHUMP00000032494|YVH1 protein-tyrosine phosphatase ortholog|serine/threonine specific protein phosphatase

Disease

- [Diabetes Mellitus](#)
- [Genetic Predisposition to Disease](#)