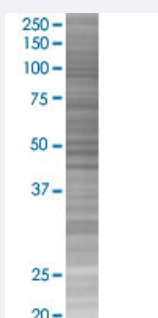


CHP 293T Cell Transient Overexpression Lysate(Denatured)

Catalog # H00011261-T02

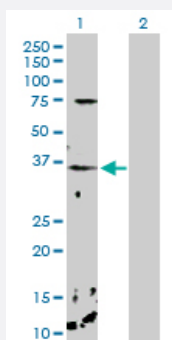
Size 100 uL

Applications



SDS-PAGE Gel

CHP transfected lysate.



Western Blot

Lane 1: CHP transfected lysate (22.50 KDa)

Lane 2: Non-transfected lysate.

Specification

Transfected Cell Line	293T
Plasmid	pCMV-CHP full-length
Host	Human
Theoretical MW (kDa)	22.5
Interspecies Antigen Sequence	Mouse (98); Rat (98)

Quality Control Testing

Transient overexpression cell lysate was tested with Anti-CHP antibody ([H00011261-D01P](#)) by Western Blots.
SDS-PAGE Gel
CHP transfected lysate.
Western Blot
Lane 1: CHP transfected lysate (22.50 KDa)
Lane 2: Non-transfected lysate.

Storage Buffer

1X Sample Buffer (50 mM Tris-HCl, 2% SDS, 10% glycerol, 300 mM 2-mercaptoethanol, 0.01% Bromophenol blue)

Storage Instruction

Store at -80°C. Aliquot to avoid repeated freezing and thawing.

Applications

- Western Blot

Gene Info — CHP

Entrez GeneID[11261](#)**GeneBank Accession#**[NM_007236](#)**Protein Accession#**[NP_009167.1](#)**Gene Name**

CHP

Gene Alias

SLC9A1BP

Gene Description

calcium binding protein P22

Omim ID[606988](#)**Gene Ontology**[Hyperlink](#)**Gene Summary**

This gene encodes a phosphoprotein that binds to the Na⁺/H⁺ exchanger NHE1. This protein serves as an essential cofactor which supports the physiological activity of NHE family members and may play a role in the mitogenic regulation of NHE1. The protein shares similarity with calcineurin B and calmodulin and it is also known to be an endogenous inhibitor of calcineurin activity. [provided by RefSeq]

Other Designations

SLC9A1 binding protein|calcineurin B homolog|calcineurin homologous protein

Pathway

- [Amyotrophic lateral sclerosis \(ALS\)](#)
- [Apoptosis](#)
- [Axon guidance](#)
- [B cell receptor signaling pathway](#)
- [Calcium signaling pathway](#)
- [Long-term potentiation](#)
- [MAPK signaling pathway](#)
- [Natural killer cell mediated cytotoxicity](#)
- [T cell receptor signaling pathway](#)
- [VEGF signaling pathway](#)
- [Wnt signaling pathway](#)

Disease

- [Genetic Predisposition to Disease](#)
- [Parkinson disease](#)