

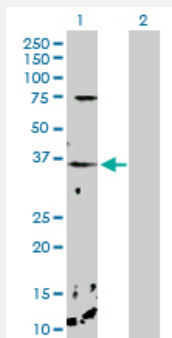
MaxPab®

CHP purified MaxPab rabbit polyclonal antibody (D01P)

Catalog # H00011261-D01P

Size 100 ug

Applications



Western Blot (Transfected lysate)

Western Blot analysis of CHP expression in transfected 293T cell line ([H00011261-T02](#)) by CHP MaxPab polyclonal antibody.

Lane 1: CHP transfected lysate(22.50 KDa).

Lane 2: Non-transfected lysate.

Specification

Product Description	Rabbit polyclonal antibody raised against a full-length human CHP protein.
Immunogen	CHP (NP_009167.1, 1 a.a. ~ 195 a.a) full-length human protein.
Sequence	MGSRASLLRDEELEEIKKETGFSHSQITRLYSRFTSLDKGENGTLSREDFQRIPELAINPLGDRIN AFFPEGEDQVNFRGFMRTLAHFRPIEDNEKSKDVNGPEPLNSRSNKLHFAFRLYDLKDEKISR ELLQVLRMMVGVNISDEQLGSIADRTIQEADQDGDSAISFTEFVKVLEKVDVEQKMSIRFLH
Host	Rabbit
Reactivity	Human
Interspecies Antigen Sequence	Mouse (98); Rat (98)
Quality Control Testing	Antibody reactive against mammalian transfected lysate.
Storage Buffer	In 1x PBS, pH 7.4
Storage Instruction	Store at -20°C or lower. Aliquot to avoid repeated freezing and thawing.

Applications

- Western Blot (Transfected lysate)

Western Blot analysis of CHP expression in transfected 293T cell line ([H00011261-T02](#)) by CHP MaxPab polyclonal antibody.

Lane 1: CHP transfected lysate(22.50 KDa).

Lane 2: Non-transfected lysate.

[Protocol Download](#)

Gene Info — CHP

Entrez GeneID	11261
---------------	-----------------------

GeneBank Accession#	NM_007236
---------------------	---------------------------

Protein Accession#	NP_009167.1
--------------------	-----------------------------

Gene Name	CHP
-----------	-----

Gene Alias	SLC9A1BP
------------	----------

Gene Description	calcium binding protein P22
------------------	-----------------------------

Omim ID	606988
---------	------------------------

Gene Ontology	Hyperlink
---------------	---------------------------

Gene Summary	This gene encodes a phosphoprotein that binds to the Na ⁺ /H ⁺ exchanger NHE1. This protein serves as an essential cofactor which supports the physiological activity of NHE family members and may play a role in the mitogenic regulation of NHE1. The protein shares similarity with calcineurin B and calmodulin and it is also known to be an endogenous inhibitor of calcineurin activity. [provided by RefSeq]
--------------	---

Other Designations	SLC9A1 binding protein calcineurin B homolog calcineurin homologous protein
--------------------	---

Pathway

- [Amyotrophic lateral sclerosis \(ALS\)](#)
- [Apoptosis](#)
- [Axon guidance](#)
- [B cell receptor signaling pathway](#)

- [Calcium signaling pathway](#)
- [Long-term potentiation](#)
- [MAPK signaling pathway](#)
- [Natural killer cell mediated cytotoxicity](#)
- [T cell receptor signaling pathway](#)
- [VEGF signaling pathway](#)
- [Wnt signaling pathway](#)

Disease

- [Genetic Predisposition to Disease](#)
- [Parkinson disease](#)