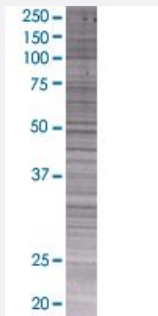


XPOT 293T Cell Transient Overexpression Lysate(Denatured)

Catalog # H00011260-T01

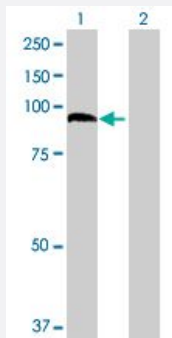
Size 100 uL

Applications



SDS-PAGE Gel

XPOT transfected lysate.



Western Blot

Lane 1: XPOT transfected lysate (110 KDa)

Lane 2: Non-transfected lysate.

Specification

Transfected Cell Line	293T
Plasmid	pCMV-XPOT full-length
Host	Human
Theoretical MW (kDa)	110
Interspecies Antigen Sequence	Mouse (95)

Quality Control Testing

Transient overexpression cell lysate was tested with Anti-XPOT antibody ([H00011260-B01](#)) by Western Blots.
SDS-PAGE Gel
XPOT transfected lysate.
Western Blot
Lane 1: XPOT transfected lysate (110 KDa)
Lane 2: Non-transfected lysate.

Storage Buffer

1X Sample Buffer (50 mM Tris-HCl, 2% SDS, 10% glycerol, 300 mM 2-mercaptoethanol, 0.01% Bromophenol blue)

Storage Instruction

Store at -80°C. Aliquot to avoid repeated freezing and thawing.

Applications

- Western Blot

Gene Info — XPOT

Entrez GeneID[11260](#)**GeneBank Accession#**[NM_007235.3](#)**Protein Accession#**[NP_009166.2](#)**Gene Name**

XPOT

Gene Alias

XPO3

Gene Description

exportin, tRNA (nuclear export receptor for tRNAs)

Omim ID[603180](#)**Gene Ontology**[Hyperlink](#)**Gene Summary**

This gene encodes a protein belonging to the RAN-GTPase exportin family that mediates export of tRNA from the nucleus to the cytoplasm. Translocation of tRNA to the cytoplasm occurs once exportin has bound both tRNA and GTP-bound RAN. [provided by RefSeq]

Other Designations

exportin-T|tRNA exportin

Disease

- [Tobacco Use Disorder](#)