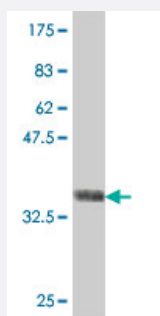


PADI2 polyclonal antibody (A01)

Catalog # H00011240-A01

Size 50 uL

Applications



Western Blot detection against Immunogen (37.99 KDa) .

Specification

Product Description	Mouse polyclonal antibody raised against a partial recombinant PADI2.
Immunogen	PADI2 (NP_003008, 1 a.a. ~ 108 a.a) partial recombinant protein with GST tag.
Sequence	MLRERTVRLQYGSRVEAVYVLGTYLWTDVYSAAPAGAQTFLKHSEHVWVEVVRDGEAEEVAT NGKQRWLLSPSTTLRVTMSQASTEASSDKVTNYYDEEGSIPIDQ
Host	Mouse
Reactivity	Human
Interspecies Antigen Sequence	Mouse (88); Rat (88)
Quality Control Testing	Antibody Reactive Against Recombinant Protein. Western Blot detection against Immunogen (37.99 KDa) .
Storage Buffer	50 % glycerol
Storage Instruction	Store at -20°C or lower. Aliquot to avoid repeated freezing and thawing.

Applications

- Western Blot (Recombinant protein)

[Protocol Download](#)

- ELISA

Gene Info — PADI2

Entrez GeneID [11240](#)

GeneBank Accession# [NM_007365](#)

Protein Accession# [NP_003008](#)

Gene Name PADI2

Gene Alias KIAA0994, PAD-H19, PAD2, PD12

Gene Description peptidyl arginine deiminase, type II

Omim ID [607935](#)

Gene Ontology [Hyperlink](#)

Gene Summary This gene encodes a member of the peptidyl arginine deiminase family of enzymes, which catalyze the post-translational deimination of proteins by converting arginine residues into citrullines in the presence of calcium ions. The family members have distinct substrate specificities and tissue-specific expression patterns. The type II enzyme is the most widely expressed family member. Known substrates for this enzyme include myelin basic protein in the central nervous system and vimentin in skeletal muscle and macrophages. This enzyme is thought to play a role in the onset and progression of neurodegenerative human disorders, including Alzheimer disease and multiple sclerosis, and it has also been implicated in glaucoma pathogenesis. This gene exists in a cluster with four other paralogous genes. [provided by RefSeq]

Other Designations OTTHUMP00000002403|OTTHUMP00000044625|peptidylarginine deiminase type II|protein arginine deiminase|protein-arginine deiminase type-2

Disease

- [Alzheimer disease](#)
- [Genetic Predisposition to Disease](#)
- [Schizophrenia](#)
- [Tobacco Use Disorder](#)