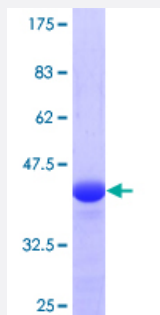


# RNF139 (Human) Recombinant Protein (Q01)

Catalog # H00011236-Q01

Size 25 ug, 10 ug

## Applications



## Specification

<b>Product Description</b>	Human RNF139 partial ORF ( NP_009149, 565 a.a. - 664 a.a.) recombinant protein with GST-tag at N-terminal.
<b>Sequence</b>	HYFHALCLRKWL YQDTCPMCHQKVYIEDDIKDNSNVSNNGFIPPNETPEEAVREAAAESDRELN EDDSTDCDDDVQRERNGVIQHTGAAAEFND DTD
<b>Host</b>	Wheat Germ (in vitro)
<b>Theoretical MW (kDa)</b>	36.63
<b>Interspecies Antigen Sequence</b>	Mouse (93); Rat (93)
<b>Preparation Method</b>	<a href="#">in vitro wheat germ expression system</a>
<b>Purification</b>	Glutathione Sepharose 4 Fast Flow
<b>Quality Control Testing</b>	12.5% SDS-PAGE Stained with Coomassie Blue.
<b>Storage Buffer</b>	50 mM Tris-HCl, 10 mM reduced Glutathione, pH=8.0 in the elution buffer.
<b>Storage Instruction</b>	Store at -80°C. Aliquot to avoid repeated freezing and thawing.
<b>Note</b>	Best use within three months from the date of receipt of this protein.

## Applications

- Enzyme-linked Immunoabsorbent Assay
- Western Blot (Recombinant protein)
- Antibody Production
- Protein Array

## Gene Info — RNF139

Entrez GeneID [11236](#)

GeneBank Accession# [NM\\_007218](#)

Protein Accession# [NP\\_009149](#)

Gene Name RNF139

Gene Alias HRCA1, MGC31961, RCA1, TRC8

Gene Description ring finger protein 139

Omim ID [144700 603046](#)

Gene Ontology [Hyperlink](#)

**Gene Summary** The protein encoded by this gene is a multi-membrane spanning protein containing a RING-H2 finger. This protein is located in the endoplasmic reticulum, and has been shown to possess ubiquitin ligase activity. This gene was found to be interrupted by a t(3:8) translocation in a family with hereditary renal and non-medullary thyroid cancer. Studies of the Drosophila counterpart suggested that this protein may interact with tumor suppressor protein VHL, as well as with COPS5/JAB1, a protein responsible for the degradation of tumor suppressor CDKN1B/P27KIP. [provided by RefSeq]

**Other Designations** multiple membrane spanning receptor TRC8|patched related protein translocated in renal cancer