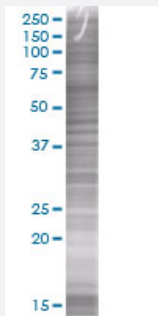


# MRPL3 293T Cell Transient Overexpression Lysate(Denatured)

Catalog # H00011222-T01

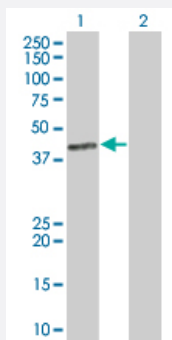
Size 100 uL

## Applications



### SDS-PAGE Gel

MRPL3 transfected lysate



### Western Blot

Lane 1: MRPL3 transfected lysate ( 38.39 KDa).

Lane 2: Non-transfected lysate.

## Specification

Transfected Cell Line	293T
Plasmid	pCMV-MRPL3 full-length
Host	Human
Theoretical MW (kDa)	38.39
Interspecies Antigen Sequence	Mouse (82); Rat (83)

**Quality Control Testing**

Transient overexpression cell lysate was tested with Anti-MRPL3 antibody ([H00011222-B01](#)) by Western Blots.  
SDS-PAGE Gel  
MRPL3 transfected lysate  
Western Blot  
Lane 1: MRPL3 transfected lysate ( 38.39 KDa).  
Lane 2: Non-transfected lysate.

**Storage Buffer**

1X Sample Buffer (50 mM Tris-HCl, 2% SDS, 10% glycerol, 300 mM 2-mercaptoethanol, 0.01% Bromophenol blue)

**Storage Instruction**

Store at -80°C. Aliquot to avoid repeated freezing and thawing.

## Applications

- Western Blot

## Gene Info — MRPL3

**Entrez GeneID**[11222](#)**GeneBank Accession#**[BC003375](#)**Protein Accession#**[AAH03375](#)**Gene Name**

MRPL3

**Gene Alias**

MRL3, RPML3

**Gene Description**

mitochondrial ribosomal protein L3

**Omim ID**[607118](#)**Gene Ontology**[Hyperlink](#)**Gene Summary**

Mammalian mitochondrial ribosomal proteins are encoded by nuclear genes and help in protein synthesis within the mitochondrion. Mitochondrial ribosomes (mitoribosomes) consist of a small 28 S subunit and a large 39S subunit. They have an estimated 75% protein to rRNA composition compared to prokaryotic ribosomes, where this ratio is reversed. Another difference between mammalian mitoribosomes and prokaryotic ribosomes is that the latter contain a 5S rRNA. Among different species, the proteins comprising the mitoribosome differ greatly in sequence, and sometimes in biochemical properties, which prevents easy recognition by sequence homology. This gene encodes a 39S subunit protein that belongs to the L3P ribosomal protein family. A pseudogene corresponding to this gene is found on chromosome 13q. [provided by RefSeq]

**Other Designations**

mitochondrial 60S ribosomal protein L3|ribosomal protein, mitochondrial, L3