

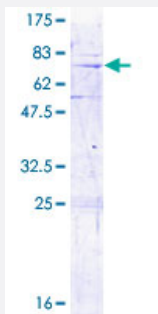
Full-Length

MRPL3 (Human) Recombinant Protein (P01)

Catalog # H00011222-P01

Size 25 ug, 10 ug

Applications



Specification

Product Description

Human MRPL3 full-length ORF (NP_009139.1, 1 a.a. - 348 a.a.) recombinant protein with GST-tag at N-terminal.

Sequence

MPGWRLLTQVGAQVLGRLGDGLGAALGPGNRTHWLFVRGLHGKSGTWWDHLSEENVPIKQ
LVSDDEKAQLASKLCPLKDEPWPIHPWEPGSFRVGLIALKLGMMPLWTKDGQKHVVTLQVQD
CHVLKYTSKENCNGKMATLSVGGKTVSRFRKATSILEFYRELGLPPKQTVKIFNITDNAAIKPGTPLY
AAHFRPGQYVDVTAKTIGKGFQGVMKRWGFKGQPATHGQTKTHRRPGAVATGDIGRVWPGTKM
PGKMGNIRTEYGLKVWRINTKHNIYVNGSVPGHKNCCLKVKKDSKLPAKYDLGKNLPPTYFPDG
DEEELPEDLYDENVCQPGAPSITFA

Host

Wheat Germ (in vitro)

Theoretical MW (kDa)

65

Interspecies Antigen Sequence

Mouse (82); Rat (83)

Preparation Method

[in vitro wheat germ expression system](#)

Purification

Glutathione Sepharose 4 Fast Flow

Quality Control Testing

12.5% SDS-PAGE Stained with Coomassie Blue.

Storage Buffer

50 mM Tris-HCl, 10 mM reduced Glutathione, pH=8.0 in the elution buffer.

Storage Instruction

Store at -80°C. Aliquot to avoid repeated freezing and thawing.

Note

Best use within three months from the date of receipt of this protein.

Applications

- Enzyme-linked Immunoabsorbent Assay
- Western Blot (Recombinant protein)
- Antibody Production
- Protein Array

Gene Info — MRPL3

Entrez GeneID[11222](#)**GeneBank Accession#**[NM_007208.2](#)**Protein Accession#**[NP_009139.1](#)**Gene Name**

MRPL3

Gene Alias

MRL3, RPML3

Gene Description

mitochondrial ribosomal protein L3

Omim ID[607118](#)**Gene Ontology**[Hyperlink](#)**Gene Summary**

Mammalian mitochondrial ribosomal proteins are encoded by nuclear genes and help in protein synthesis within the mitochondrion. Mitochondrial ribosomes (mitoribosomes) consist of a small 28 S subunit and a large 39S subunit. They have an estimated 75% protein to rRNA composition compared to prokaryotic ribosomes, where this ratio is reversed. Another difference between mammalian mitoribosomes and prokaryotic ribosomes is that the latter contain a 5S rRNA. Among different species, the proteins comprising the mitoribosome differ greatly in sequence, and sometimes in biochemical properties, which prevents easy recognition by sequence homology. This gene encodes a 39S subunit protein that belongs to the L3P ribosomal protein family. A pseudogene corresponding to this gene is found on chromosome 13q. [provided by RefSeq]

Other Designations

mitochondrial 60S ribosomal protein L3|ribosomal protein, mitochondrial, L3