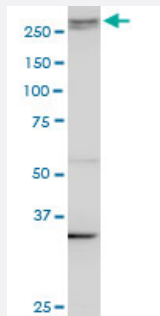


# AKAP13 monoclonal antibody (M10), clone 3D6

Catalog # H00011214-M10

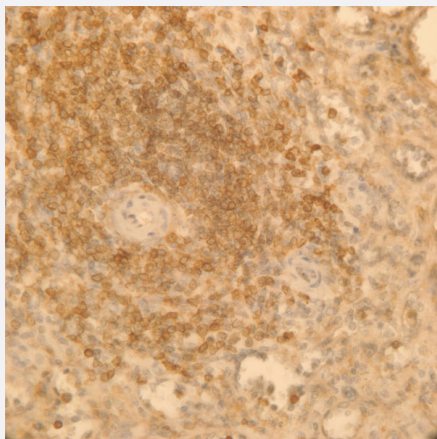
Size 100 ug

## Applications



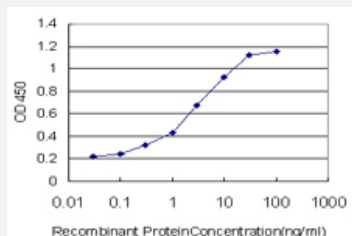
### Western Blot (Cell lysate)

AKAP13 monoclonal antibody (M10), clone 3D6. Western Blot analysis of AKAP13 expression in HeLa.



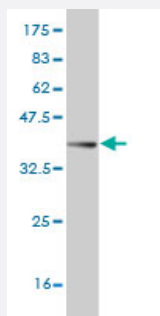
### Immunohistochemistry (Formalin/PFA-fixed paraffin-embedded sections)

Immunoperoxidase of monoclonal antibody to AKAP13 on formalin-fixed paraffin-embedded human spleen. [antibody concentration 1.5 ug/ml]



### Sandwich ELISA (Recombinant protein)

Detection limit for recombinant GST tagged AKAP13 is approximately 0.03ng/ml as a capture antibody.



Western Blot detection against Immunogen (37.84 KDa) .

## Specification

<b>Product Description</b>	Mouse monoclonal antibody raised against a partial recombinant AKAP13.
<b>Immunogen</b>	AKAP13 (NP_006729, 1 a.a. ~ 110 a.a) partial recombinant protein with GST tag. MW of the GST tag alone is 26 KDa.
<b>Sequence</b>	MKLNPQQAPLYGDCVVTVLLAEEDKAEDDVVFLVFLGSTLRHCTSTRKVSSDTLETIAPGHDCCE ETVKVQLCASKEGLPVFVVAEEDFHFVQDEAYDAAQFLATSAGNQ
<b>Host</b>	Mouse
<b>Reactivity</b>	Human
<b>Interspecies Antigen Sequence</b>	Mouse (89); Rat (86)
<b>Isotype</b>	IgG2b Kappa
<b>Quality Control Testing</b>	Antibody Reactive Against Recombinant Protein. Western Blot detection against Immunogen (37.84 KDa) .
<b>Storage Buffer</b>	In 1x PBS, pH 7.4
<b>Storage Instruction</b>	Store at -20°C or lower. Aliquot to avoid repeated freezing and thawing.

## Applications

- Western Blot (Cell lysate)

AKAP13 monoclonal antibody (M10), clone 3D6. Western Blot analysis of AKAP13 expression in HeLa.

[Protocol Download](#)

- Western Blot (Recombinant protein)

[Protocol Download](#)

- Immunohistochemistry (Formalin/PFA-fixed paraffin-embedded sections)

Immunoperoxidase of monoclonal antibody to AKAP13 on formalin-fixed paraffin-embedded human spleen. [antibody concentration 1.5 ug/ml]

[Protocol Download](#)

- Sandwich ELISA (Recombinant protein)

Detection limit for recombinant GST tagged AKAP13 is approximately 0.03ng/ml as a capture antibody.

[Protocol Download](#)

- ELISA

## Gene Info — AKAP13

Entrez GeneID [11214](#)

GeneBank Accession# [NM\\_006738](#)

Protein Accession# [NP\\_006729](#)

Gene Name AKAP13

Gene Alias AKAP-Lbc, ARHGEF13, BRX, FLJ11952, FLJ43341, HA-3, Ht31, LBC, PROTO-LB, PROTO-LB C, c-lbc

Gene Description A kinase (PRKA) anchor protein 13

Omim ID [604686](#)

Gene Ontology [Hyperlink](#)

### Gene Summary

The A-kinase anchor proteins (AKAPs) are a group of structurally diverse proteins, which have the common function of binding to the regulatory subunit of protein kinase A (PKA) and confining the holoenzyme to discrete locations within the cell. This gene encodes a member of the AKAP family. Alternative splicing of this gene results in at least 3 transcript variants encoding different isoforms containing a dbl oncogene homology (DH) domain and a pleckstrin homology (PH) domain. The DH domain is associated with guanine nucleotide exchange activation for the Rho/Rac family of small GTP binding proteins, resulting in the conversion of the inactive GTPase to the active form capable of transducing signals. The PH domain has multiple functions. Therefore, these isoforms function as scaffolding proteins to coordinate a Rho signaling pathway and, in addition, function as protein kinase A-anchoring proteins. [provided by RefSeq]

**Other Designations**

A-kinase anchor protein 13|A-kinase anchoring protein|breast cancer nuclear receptor-binding auxiliary protein|guanine nucleotide exchange factor Lbc|lymphoid blast crisis oncogene

**Disease**

- [Angina Pectoris](#)
- [Breast cancer](#)
- [Breast Neoplasms](#)
- [Cell Transformation](#)
- [Coronary Vasospasm](#)
- [Genetic Predisposition to Disease](#)
- [Graft vs Host Disease](#)
- [Tobacco Use Disorder](#)