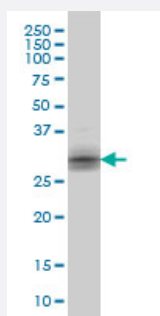


KLK8 monoclonal antibody (M01), clone 2F11

Catalog # H00011202-M01

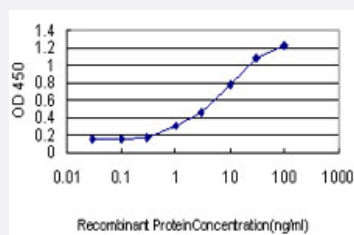
Size 100 ug

Applications



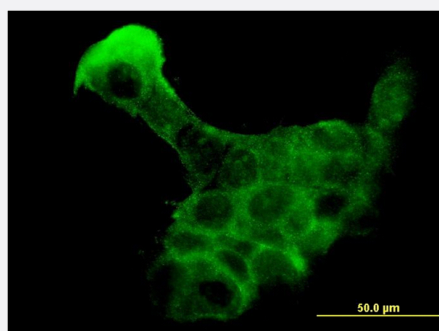
Western Blot (Cell lysate)

KLK8 monoclonal antibody (M01), clone 2F11 Western Blot analysis of KLK8 expression in A-431 (Cat # L015V1).



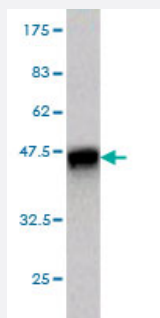
Sandwich ELISA (Recombinant protein)

Detection limit for recombinant GST tagged KLK8 is approximately 0.3ng/ml as a capture antibody.



Immunofluorescence

Immunofluorescence of monoclonal antibody to KLK8 on A-431 cell. [antibody concentration 10 ug/ml]



Western Blot detection against Immunogen (37.62 KDa) .

Specification

Product Description	Mouse monoclonal antibody raised against a partial recombinant KLK8.
Immunogen	KLK8 (NP_009127, 97 a.a. ~ 204 a.a) partial recombinant protein with GST tag. MW of the GST tag alone is 26 KDa.
Sequence	EIPVVQSIPHPCYNSSDVEDHNHDLMLLQLRDQASLGSKVKPISLADHCTQPGQKCTVSGWGTVT SPRENFPTLNC AEVKIFPQKKCEDAYPGQITDGMVCAGSSKG
Host	Mouse
Reactivity	Human
Interspecies Antigen Sequence	Mouse (72); Rat (72)
Isotype	IgG2a Kappa
Quality Control Testing	Antibody Reactive Against Recombinant Protein. Western Blot detection against Immunogen (37.62 KDa) .
Storage Buffer	In 1x PBS, pH 7.4
Storage Instruction	Store at -20°C or lower. Aliquot to avoid repeated freezing and thawing.

Applications

- Western Blot (Cell lysate)

KLK8 monoclonal antibody (M01), clone 2F11 Western Blot analysis of KLK8 expression in A-431 (Cat # L015V1).

[Protocol Download](#)

- Western Blot (Recombinant protein)

[Protocol Download](#)

- Sandwich ELISA (Recombinant protein)

Detection limit for recombinant GST tagged KLK8 is approximately 0.3ng/ml as a capture antibody.

[Protocol Download](#)

- ELISA

- Immunofluorescence

Immunofluorescence of monoclonal antibody to KLK8 on A-431 cell. [antibody concentration 10 ug/ml]

Gene Info — KLK8

Entrez GeneID [11202](#)

GeneBank Accession# [NM_007196](#)

Protein Accession# [NP_009127](#)

Gene Name KLK8

Gene Alias HNP, NP, NRPN, PRSS19, TADG14

Gene Description kallikrein-related peptidase 8

Omim ID [605644](#)

Gene Ontology [Hyperlink](#)

Gene Summary Kallikreins are a subgroup of serine proteases having diverse physiological functions. Growing evidence suggests that many kallikreins are implicated in carcinogenesis and some have potential as novel cancer and other disease biomarkers. This gene is one of the fifteen kallikrein subfamily members located in a cluster on chromosome 19. Alternate splicing of this gene results in four transcript variants encoding four different isoforms. The isoforms exhibit distinct patterns of expression that suggest roles in brain plasticity and ovarian cancer. [provided by RefSeq]

Other Designations KLK8 protein type 1|KLK8 protein type 2|kallikrein 8|kallikrein 8 (neuropsin/ovasin)|neuropsin type 1|neuropsin type 2|ovasin|protease, serine, 19|tumor-associated differentially expressed gene 14

Disease

- [Bipolar Disorder](#)
- [Cognition](#)
- [Depressive Disorder](#)
- [Genetic Predisposition to Disease](#)
- [Neuropsychological Tests](#)
- [Prostatic Neoplasms](#)
- [Schizophrenia](#)