

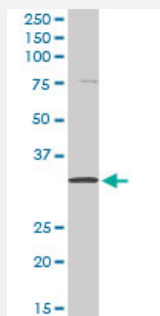
MaxPab®

KLK8 purified MaxPab rabbit polyclonal antibody (D01P)

Catalog # H00011202-D01P

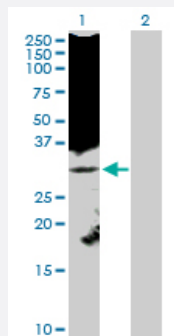
Size 100 ug

Applications



Western Blot (Tissue lysate)

KLK8 MaxPab rabbit polyclonal antibody. Western Blot analysis of KLK8 expression in human kidney.



Western Blot (Transfected lysate)

Western Blot analysis of KLK8 expression in transfected 293T cell line ([H00011202-T02](#)) by KLK8 MaxPab polyclonal antibody.

Lane 1: KLK8 transfected lysate(28.00 KDa).

Lane 2: Non-transfected lysate.

Specification

Product Description

Rabbit polyclonal antibody raised against a full-length human KLK8 protein.

Immunogen

KLK8 (NP_009127.1, 1 a.a. ~ 260 a.a) full-length human protein.

Sequence

MGRPRPRAAKTWMFLLLLGGAWAGHSRAQEDKVLGGHECQPHSQPWQAALFQGQQLLCGGV
LVGGNWVLTAHCKKPKYTVRLGDHSLQNKDGPEQEIPVVQSIPHPCYNSSDVEDHNHDLMLLQ
LRDQASLGSKVKPISLADHCTQPGQKCTVSGWGTVTSPRENFPTLNCAEVKIFPQKKCEDAYP
GQITDGMVCAGSSKGADTCQGDSGGPLVCDGALQGITSWGSDDPCGRSDKPGVYTNICRYLDWIK
KIIGSKG

Host

Rabbit

Reactivity	Human
Interspecies Antigen Sequence	Mouse (72); Rat (72)
Quality Control Testing	Antibody reactive against mammalian transfected lysate.
Storage Buffer	In 1x PBS, pH 7.4
Storage Instruction	Store at -20°C or lower. Aliquot to avoid repeated freezing and thawing.

Applications

- Western Blot (Tissue lysate)

KLK8 MaxPab rabbit polyclonal antibody. Western Blot analysis of KLK8 expression in human kidney.

[Protocol Download](#)

- Western Blot (Transfected lysate)

Western Blot analysis of KLK8 expression in transfected 293T cell line ([H00011202-T02](#)) by KLK8 MaxPab polyclonal antibody.

Lane 1: KLK8 transfected lysate(28.00 KDa).

Lane 2: Non-transfected lysate.

[Protocol Download](#)

Gene Info — KLK8

Entrez GeneID	11202
GeneBank Accession#	NM_007196
Protein Accession#	NP_009127.1
Gene Name	KLK8
Gene Alias	HNP, NP, NRPN, PRSS19, TADG14
Gene Description	kallikrein-related peptidase 8
Omim ID	605644
Gene Ontology	Hyperlink

Gene Summary

Kallikreins are a subgroup of serine proteases having diverse physiological functions. Growing evidence suggests that many kallikreins are implicated in carcinogenesis and some have potential as novel cancer and other disease biomarkers. This gene is one of the fifteen kallikrein subfamily members located in a cluster on chromosome 19. Alternate splicing of this gene results in four transcript variants encoding four different isoforms. The isoforms exhibit distinct patterns of expression that suggest roles in brain plasticity and ovarian cancer. [provided by RefSeq]

Other Designations

KLK8 protein type 1|KLK8 protein type 2|kallikrein 8|kallikrein 8 (neuropsin/ovasin)|neuropsin type 1|neuropsin type 2|ovasin|protease, serine, 19|tumor-associated differentially expressed gene 14

Disease

- [Bipolar Disorder](#)
- [Cognition](#)
- [Depressive Disorder](#)
- [Genetic Predisposition to Disease](#)
- [Neuropsychological Tests](#)
- [Prostatic Neoplasms](#)
- [Schizophrenia](#)