

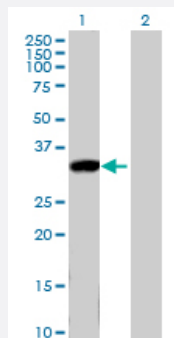
MaxPab®

KLK8 purified MaxPab mouse polyclonal antibody (B01P)

Catalog # H00011202-B01P

Size 50 ug

Applications



Western Blot (Transfected lysate)

Western Blot analysis of KLK8 expression in transfected 293T cell line ([H00011202-T01](#)) by KLK8 MaxPab polyclonal antibody.

Lane 1: KLK8 transfected lysate(28.6 KDa).

Lane 2: Non-transfected lysate.

Specification

Product Description	Mouse polyclonal antibody raised against a full-length human KLK8 protein.
Immunogen	KLK8 (NP_009127.1, 1 a.a. ~ 260 a.a) full-length human protein.
Sequence	MGRPRPRAAKTWMFLLLLGGAWAGHSRAQEDKVLGGHECQPHSQPWQAALFQGQQLLCGGV LVGGNWWLTAACHCKKPKYTVRLGDHSLQNKDGPEQEIPVVQSIPHPCYNSSDVEDHNNHDLMLLQ LRDQASLGSKVKPISLADHCTQPGQKCTVSGWGTVTSPRENFPTLNCAEVKIFPQKKCEDAYP GQITDGMVCAGSSKGADTCQGDSGGPLVCDGALQGITSWGSDPCGRSDKPGVYTNICRYLDWIK KIIGSKG
Host	Mouse
Reactivity	Human
Interspecies Antigen Sequence	Mouse (72); Rat (72)
Quality Control Testing	Antibody reactive against mammalian transfected lysate.
Storage Buffer	In 1x PBS, pH 7.4
Storage Instruction	Store at -20°C or lower. Aliquot to avoid repeated freezing and thawing.

Applications

- Western Blot (Transfected lysate)

Western Blot analysis of KLK8 expression in transfected 293T cell line ([H00011202-T01](#)) by KLK8 MaxPab polyclonal antibody.

Lane 1: KLK8 transfected lysate(28.6 KDa).

Lane 2: Non-transfected lysate.

[Protocol Download](#)

Gene Info — KLK8

Entrez GeneID [11202](#)

GeneBank Accession# [NM_007196](#)

Protein Accession# [NP_009127.1](#)

Gene Name KLK8

Gene Alias HNP, NP, NRPN, PRSS19, TADG14

Gene Description kallikrein-related peptidase 8

Omim ID [605644](#)

Gene Ontology [Hyperlink](#)

Gene Summary Kallikreins are a subgroup of serine proteases having diverse physiological functions. Growing evidence suggests that many kallikreins are implicated in carcinogenesis and some have potential as novel cancer and other disease biomarkers. This gene is one of the fifteen kallikrein subfamily members located in a cluster on chromosome 19. Alternate splicing of this gene results in four transcript variants encoding four different isoforms. The isoforms exhibit distinct patterns of expression that suggest roles in brain plasticity and ovarian cancer. [provided by RefSeq]

Other Designations KLK8 protein type 1|KLK8 protein type 2|kallikrein 8|kallikrein 8 (neuropsin/ovasin)|neuropsin type 1|neuropsin type 2|ovasin|protease, serine, 19|tumor-associated differentially expressed gene 14

Disease

- [Bipolar Disorder](#)
- [Cognition](#)

- [Depressive Disorder](#)
- [Genetic Predisposition to Disease](#)
- [Neuropsychological Tests](#)
- [Prostatic Neoplasms](#)
- [Schizophrenia](#)