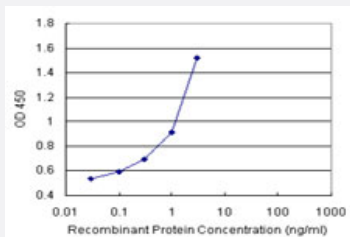


ANXA10 (Human) Matched Antibody Pair

Catalog # H00011199-AP11 Size 1 Set

Applications



Sandwich ELISA detection sensitivity ranging from 0.03 ng/ml to 100 ng/ml.

Specification

Product Description	This antibody pair set comes with a matched antibody pair to detect and quantify the protein level of human ANXA10.
Reactivity	Human
Interspecies Antigen Sequence	Mouse (88); Rat (87)
Quality Control Testing	Standard curve using recombinant protein (H00011199-P01) as an analyte. Sandwich ELISA detection sensitivity ranging from 0.03 ng/ml to 100 ng/ml.
Supplied Product	Antibody pair set content: 1. Capture antibody: rabbit MaxPab® affinity purified polyclonal anti-ANXA10 (100 ug) 2. Detection antibody: mouse monoclonal anti-ANXA10, IgG2b Kappa (20 ug) *Reagents are sufficient for at least 1-2 x 96 well plates using recommended protocols.
Storage Instruction	Store reagents of the antibody pair set at -20°C or lower. Please aliquot to avoid repeated freeze thaw cycle. Reagents should be returned to -20°C storage immediately after use.

Applications

- ELISA Pair (Recombinant protein)

[Protocol Download](#)

Gene Info — ANXA10

Entrez GeneID	11199
---------------	-----------------------

Gene Name	ANXA10
-----------	--------

Gene Alias	ANX14
------------	-------

Gene Description	annexin A10
------------------	-------------

Omim ID	608008
---------	------------------------

Gene Ontology	Hyperlink
---------------	---------------------------

Gene Summary	This gene encodes a member of the annexin family. Members of this calcium-dependent phospholipid-binding protein family play a role in the regulation of cellular growth and in signal transduction pathways. The function of this gene has not yet been determined. [provided by RefSeq]
--------------	---

Other Designations	annexin 14
--------------------	------------