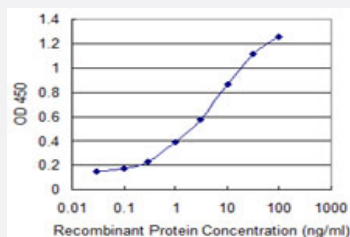


SUPT16H monoclonal antibody (M04), clone 1F1

Catalog # H00011198-M04

Size 100 ug

Applications



Sandwich ELISA (Recombinant protein)

Detection limit for recombinant GST tagged SUPT16H is 0.03 ng/ml as a capture antibody.

Specification

Product Description	Mouse monoclonal antibody raised against a partial recombinant SUPT16H.
Immunogen	SUPT16H (NP_009123, 608 a.a. ~ 715 a.a) partial recombinant protein with GST tag. MW of the GST tag alone is 26 KDa.
Sequence	PGEQTVPALNLQNAFRIIKEVQKRYKTREAEKEKEGIMVKQDSLVINLNRSNPKLKDLYIRPNIAQKR MQGSLEAHVNGFRFTSVRGDKVDILYNNIKHALFQPCDGE
Host	Mouse
Reactivity	Human
Isotype	IgG2b Kappa
Quality Control Testing	Antibody Reactive Against Recombinant Protein.
Storage Buffer	In 1x PBS, pH 7.4
Storage Instruction	Store at -20°C or lower. Aliquot to avoid repeated freezing and thawing.

Applications

- Sandwich ELISA (Recombinant protein)

Detection limit for recombinant GST tagged SUPT16H is 0.03 ng/ml as a capture antibody.

[Protocol Download](#)

- ELISA

Gene Info — SUPT16H

Entrez GeneID [11198](#)

GeneBank Accession# [NM_007192](#)

Protein Accession# [NP_009123](#)

Gene Name SUPT16H

Gene Alias CDC68, FACT, FACTP140, FLJ10857, FLJ14010, FLJ34357, SPT16/CDC68

Gene Description suppressor of Ty 16 homolog (S. cerevisiae)

Omim ID [605012](#)

Gene Ontology [Hyperlink](#)

Gene Summary Transcription of protein-coding genes can be reconstituted on naked DNA with only the general transcription factors and RNA polymerase II. However, this minimal system cannot transcribe DNA packaged into chromatin, indicating that accessory factors may facilitate access to DNA. One such factor, FACT (facilitates chromatin transcription), interacts specifically with histones H2A/H2B to effect nucleosome disassembly and transcription elongation. FACT is composed of an 80 kDa subunit and a 140 kDa subunit; this gene encodes the 140 kDa subunit. [provided by RefSeq]

Other Designations chromatin-specific transcription elongation factor large subunit|facilitates chromatin remodeling 140 kDa subunit