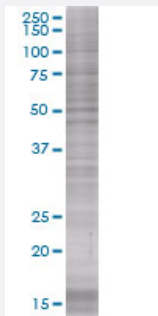


WIF1 293T Cell Transient Overexpression Lysate(Denatured)

Catalog # H00011197-T01

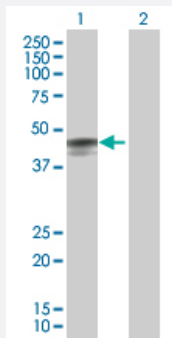
Size 100 uL

Applications



SDS-PAGE Gel

WIF1 transfected lysate



Western Blot

Lane 1: WIF1 transfected lysate (41.5 KDa).

Lane 2: Non-transfected lysate.

Specification

Transfected Cell Line	293T
Plasmid	pCMV-WIF1 full-length
Host	Human
Theoretical MW (kDa)	41.5
Interspecies Antigen Sequence	Mouse (93); Rat (88)

Quality Control Testing

Transient overexpression cell lysate was tested with Anti-WIF1 antibody ([H00011197-B01](#)) by Western Blots.

SDS-PAGE Gel

WIF1 transfected lysate

Western Blot

Lane 1: WIF1 transfected lysate (41.5 KDa).

Lane 2: Non-transfected lysate.

Storage Buffer

1X Sample Buffer (50 mM Tris-HCl, 2% SDS, 10% glycerol, 300 mM 2-mercaptoethanol, 0.01% Bromophenol blue)

Storage Instruction

Store at -80°C. Aliquot to avoid repeated freezing and thawing.

Applications

- Western Blot

Gene Info — WIF1

Entrez GeneID

[11197](#)

GeneBank Accession#

[BC018037](#)

Protein Accession#

[AAH18037](#)

Gene Name

WIF1

Gene Alias

WIF-1

Gene Description

WNT inhibitory factor 1

Omim ID

[605186](#)

Gene Ontology

[Hyperlink](#)

Gene Summary

WNT proteins are extracellular signaling molecules involved in the control of embryonic development. This gene encodes a secreted protein, which binds WNT proteins and inhibits their activities. This protein contains a WNT inhibitory factor (WIF) domain and 5 epidermal growth factor (EGF)-like domains. It may be involved in mesoderm segmentation. This protein is found to be present in fish, amphibia and mammals. [provided by RefSeq]

Other Designations

-

Pathway

- [Wnt signaling pathway](#)

Disease

- [Asthma](#)
- [Dominance](#)
- [Schizophrenia](#)