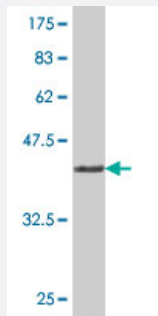


WIF1 polyclonal antibody (A01)

Catalog # H00011197-A01

Size 50 uL

Applications



Western Blot detection against Immunogen (38.21 KDa) .

Specification

| | |
|--------------------------------------|--|
| Product Description | Mouse polyclonal antibody raised against a partial recombinant WIF1. |
| Immunogen | WIF1 (NP_009122, 29 a.a. ~ 138 a.a) partial recombinant protein with GST tag. |
| Sequence | GPPQEESLYLWIDAHQARVLIGFEEDILVSEGKMAPFTHDFRKAQQRMPAIPVNIHSMNFTWQAA GQAEYFYEFSLRSLDKGIMADPTVNVPLLGTVPHKASVVQVGF |
| Host | Mouse |
| Reactivity | Human |
| Interspecies Antigen Sequence | Mouse (93); Rat (88) |
| Quality Control Testing | Antibody Reactive Against Recombinant Protein. Western Blot detection against Immunogen (38.21 KDa) . |
| Storage Buffer | 50 % glycerol |
| Storage Instruction | Store at -20°C or lower. Aliquot to avoid repeated freezing and thawing. |

Applications

- Western Blot (Recombinant protein)

[Protocol Download](#)

- ELISA

Gene Info — WIF1

Entrez GeneID [11197](#)

GeneBank Accession# [NM_007191](#)

Protein Accession# [NP_009122](#)

Gene Name WIF1

Gene Alias WIF-1

Gene Description WNT inhibitory factor 1

Omim ID [605186](#)

Gene Ontology [Hyperlink](#)

Gene Summary WNT proteins are extracellular signaling molecules involved in the control of embryonic development. This gene encodes a secreted protein, which binds WNT proteins and inhibits their activities. This protein contains a WNT inhibitory factor (WIF) domain and 5 epidermal growth factor (EGF)-like domains. It may be involved in mesoderm segmentation. This protein is found to be present in fish, amphibia and mammals. [provided by RefSeq]

Other Designations -

Pathway

- [Wnt signaling pathway](#)

Disease

- [Asthma](#)
- [Dominance](#)
- [Schizophrenia](#)