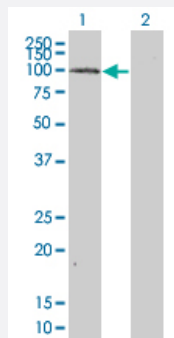


MAP4K5 monoclonal antibody (M01), clone 3H3

Catalog # H00011183-M01

Size 100 ug

Applications

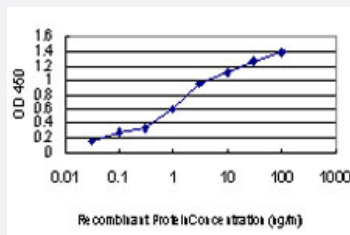


Western Blot (Transfected lysate)

Western Blot analysis of MAP4K5 expression in transfected 293T cell line by MAP4K5 monoclonal antibody (M01), clone 3H3.

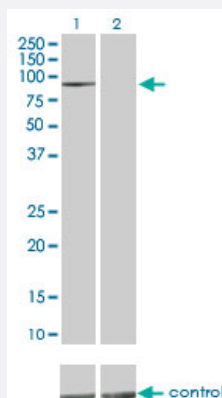
Lane 1: MAP4K5 transfected lysate (95.04 kDa).

Lane 2: Non-transfected lysate.



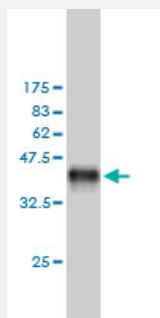
Sandwich ELISA (Recombinant protein)

Detection limit for recombinant GST tagged MAP4K5 is approximately 0.03 ng/ml as a capture antibody.



RNAi Knockdown (Antibody validated)

Western blot analysis of MAP4K5 over-expressed 293 cell line, cotransfected with MAP4K5 Validated Chimera RNAi (Cat # H00011183-R01V) (Lane 2) or non-transfected control (Lane 1). Blot probed with MAP4K5 monoclonal antibody (M01) clone 3H3 (Cat # H00011183-M01). GAPDH (36.1 kDa) used as specificity and loading control.



Western Blot detection against Immunogen (37.73 KDa) .

Specification

Product Description	Mouse monoclonal antibody raised against a partial recombinant MAP4K5.
Immunogen	MAP4K5 (AAH36013, 361 a.a. ~ 470 a.a) partial recombinant protein with GST tag. MW of the GST tag alone is 26 KDa.
Sequence	SSDPNFMLQWNPFVDGANTGKSTSKRAIPPLPPKPRISSYPEDNFPDEEKASTIKHCPDSESRA PQILRRQSSPSCGPVAETSSIGNGDGISKLMSENTEGSAQAPQLP
Host	Mouse
Reactivity	Human
Interspecies Antigen Sequence	Mouse (96); Rat (96)
Isotype	IgG1 kappa
Quality Control Testing	Antibody Reactive Against Recombinant Protein. Western Blot detection against Immunogen (37.73 KDa) .
Storage Buffer	In 1x PBS, pH 7.4
Storage Instruction	Store at -20°C or lower. Aliquot to avoid repeated freezing and thawing.

Applications

● Western Blot (Transfected lysate)

Western Blot analysis of MAP4K5 expression in transfected 293T cell line by MAP4K5 monoclonal antibody (M01), clone 3H3.

Lane 1: MAP4K5 transfected lysate(95.04 KDa).

Lane 2: Non-transfected lysate.

[Protocol Download](#)

- Western Blot (Recombinant protein)

[Protocol Download](#)

- Sandwich ELISA (Recombinant protein)

Detection limit for recombinant GST tagged MAP4K5 is approximately 0.03ng/ml as a capture antibody.

[Protocol Download](#)

- ELISA

- RNAi Knockdown (Antibody validated)

Western blot analysis of MAP4K5 over-expressed 293 cell line, cotransfected with MAP4K5 Validated Chimera RNAi (Cat # H00011183-R01V) (Lane 2) or non-transfected control (Lane 1). Blot probed with MAP4K5 monoclonal antibody (M01) clone 3H3 (Cat # H00011183-M01). GAPDH (36.1 kDa) used as specificity and loading control.

[Protocol Download](#)

Gene Info — MAP4K5

Entrez GeneID [11183](#)

GeneBank Accession# [BC036013](#)

Protein Accession# [AAH36013](#)

Gene Name MAP4K5

Gene Alias GCKR, KHS, KHS1, MAPKKKK5

Gene Description mitogen-activated protein kinase kinase kinase kinase 5

Omim ID [604923](#)

Gene Ontology [Hyperlink](#)

Gene Summary This gene encodes a member of the serine/threonine protein kinase family, that is highly similar to yeast SPS1/STE20 kinase. Yeast SPS1/STE20 functions near the beginning of the MAP kinase signal cascades that is essential for yeast pheromone response. This kinase was shown to activate Jun kinase in mammalian cells, which suggested a role in stress response. Two alternatively spliced transcript variants encoding the same protein have been described for this gene. [provided by RefSeq]

Other Designations germinal center kinase-related|kinase homologous to SPS1/STE20

Disease

- [Kidney Failure](#)