

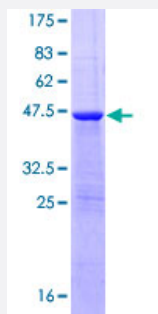
Full-Length

## FAM107A (Human) Recombinant Protein (P01)

Catalog # H00011170-P01

Size 25 ug, 10 ug

### Applications



### Specification

<b>Product Description</b>	Human FAM107A full-length ORF ( NP_009108.1, 1 a.a. - 144 a.a.) recombinant protein with GST-tag at N-terminal.
<b>Sequence</b>	MYSEIQRERADIGGLMARPEYREWNPelikPKKLLNPVKASRSHQELHRELLMNHRRGLGVDSKP ELQRVLEHRRRNQLIKKKKEELEAKRLQCPFEQELLRRQQRLNQLKPPPEKEEDHAPEFIKVREN LRRITLTSEEREL
<b>Host</b>	Wheat Germ (in vitro)
<b>Theoretical MW (kDa)</b>	43.9
<b>Interspecies Antigen Sequence</b>	Mouse (90); Rat (91)
<b>Preparation Method</b>	<a href="#">in vitro wheat germ expression system</a>
<b>Purification</b>	Glutathione Sepharose 4 Fast Flow
<b>Quality Control Testing</b>	12.5% SDS-PAGE Stained with Coomassie Blue.
<b>Storage Buffer</b>	50 mM Tris-HCl, 10 mM reduced Glutathione, pH=8.0 in the elution buffer.
<b>Storage Instruction</b>	Store at -80°C. Aliquot to avoid repeated freezing and thawing.

## Note

Best use within three months from the date of receipt of this protein.

## Applications

- Enzyme-linked Immunoabsorbent Assay
- Western Blot (Recombinant protein)
- Antibody Production
- Protein Array

## Gene Info — FAM107A

Entrez GeneID [11170](#)

GeneBank Accession# [NM\\_007177.1](#)

Protein Accession# [NP\\_009108.1](#)

Gene Name FAM107A

Gene Alias DRR1, FLJ30158, FLJ45473, TU3A

Gene Description family with sequence similarity 107, member A

Omim ID [608295](#)

Gene Ontology [Hyperlink](#)

Gene Summary O

Other Designations downregulated in renal cell carcinoma|family with sequence similarity 107 member A transcript