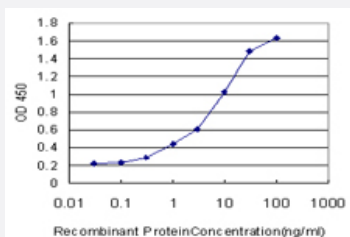


# SOX21 monoclonal antibody (M01), clone 2G10

Catalog # H00011166-M01

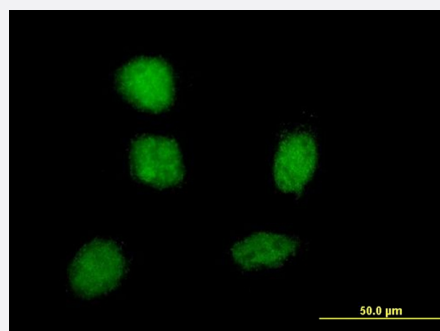
Size 100 ug

## Applications



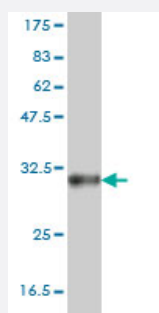
### Sandwich ELISA (Recombinant protein)

Detection limit for recombinant GST tagged SOX21 is approximately 0.03ng/ml as a capture antibody.



### Immunofluorescence

Immunofluorescence of monoclonal antibody to SOX21 on HeLa cell . [antibody concentration 10 ug/ml]



Western Blot detection against Immunogen (30.36 KDa) .

## Specification

### Product Description

Mouse monoclonal antibody raised against a partial recombinant SOX21.

Immunogen	SOX21 (NP_009015, 224 a.a. ~ 265 a.a) partial recombinant protein with GST tag. MW of the GST tag alone is 26 KDa.
Sequence	HSHPSPGNPGYMIPCNCSAWPSPGLQPPLAYILLPGMGKPQL
Host	Mouse
Reactivity	Human
Interspecies Antigen Sequence	Mouse (99)
Isotype	IgG2a Kappa
Quality Control Testing	Antibody Reactive Against Recombinant Protein. Western Blot detection against Immunogen (30.36 KDa) .
Storage Buffer	In 1x PBS, pH 7.4
Storage Instruction	Store at -20°C or lower. Aliquot to avoid repeated freezing and thawing.

## Applications

- Western Blot (Recombinant protein)

[Protocol Download](#)

- Sandwich ELISA (Recombinant protein)

Detection limit for recombinant GST tagged SOX21 is approximately 0.03ng/ml as a capture antibody.

[Protocol Download](#)

- ELISA

- Immunofluorescence

Immunofluorescence of monoclonal antibody to SOX21 on HeLa cell . [antibody concentration 10 ug/ml]

## Gene Info — SOX21

Entrez GeneID	<a href="#">11166</a>
GeneBank Accession#	<a href="#">NM_007084</a>
Protein Accession#	<a href="#">NP_009015</a>

Gene Name	SOX21
Gene Alias	SOX25
Gene Description	SRY (sex determining region Y)-box 21
Omim ID	<a href="#">604974</a>
Gene Ontology	<a href="#">Hyperlink</a>
Gene Summary	SRY-related HMG-box (SOX) genes encode a family of DNA-binding proteins containing a 79-amino acid HMG (high mobility group) domain that shares at least 50% sequence identity with the DNA-binding HMG box of the SRY protein (MIM 480000). SOX proteins are divided into 6 subgroups based on sequence similarity within and outside of the HMG domain. For additional background information on SOX genes, see SOX1 (MIM 602148).[supplied by OMIM]
Other Designations	OTTHUMP00000018558 SRY-box 21